

NAGOYA CALENDAR

ENGLISH EDITION

Website: www.nic-nagoya.or.jp
Phone: 052-581-0100

「Nagoya Calendar」は生活情報や名古屋周辺の
イベント等の情報を掲載している英語の月刊情報誌です。

1

2022
January

Nagoya International School

**Chubu's only IBO World School offering
IB PYP, MYP and DP Programs in English**

- Mission Driven, Inclusive, Community Supported
- Fully Accredited • Caring and Qualified Teachers
- Diverse PreK-High School Student Body
- Multiple Levels of Japanese Language Taught K-12
- Bus Route and Scholarship Information Available

www.nis.ac.jp



Inquire Inspire Impact



Nagoya International Center News & Events

●Nagoya International Center Information Counter – Phone: 052-581-0100

★NIC consultations available in person at NIC, by phone or online (via Skype). See the NIC website for details.

The Nagoya International Center is a 7-minute walk or a 2-minute subway ride from Nagoya Station.
Kokusai Center Station, on the Sakura-dori Subway Line, is linked to the Nagoya International Center at the basement level.



● The **Nagoya International Center Library & Information Counter** are open **Tuesday to Sunday, 9:00 – 19:00**.

● **Closed on Mondays, December 29 - January 3, & the second Sundays of August & February.**

● Paid car-parking is also available at the Center and in the immediate vicinity.

★Information Counter 情報カウンター

Information on daily life and sightseeing in 9 languages (times vary), Japanese & English available Tue. to Sun. 9:00 – 19:00. Phone: 052-581-0100, E-mail: info@nic-nagoya.or.jp

★Free Personal Counseling 外国人こころの相談

English-speaking counselor available on Sun. by appointment to provide support to those with difficulties in their lives in Japan. Reservations: Call the NIC 3F Info Counter at 052-581-0100. Portuguese, Spanish, Chinese also available.

★Free Legal Consultations 外国人無料法律相談

Consultations with a certified lawyer available on Sat. 10:00 - 12:30 by reservation only. Please leave your name & phone number on the answering machine at 052-581-6111. A staff member will call you back at a later date to schedule your appointment.

★Gyoseishoshi Consultations 行政書士による相談

Consult a certified administrative procedures legal specialist about procedures related to immigration, setting up a business, etc.
Wed. & Sun. 13:00 - 17:00 by appointment. Phone: 052- 581-0100.

★Free Educational Counseling Service 教育相談

Advice and information on education for foreign resident children, including schools, admissions, daily life, potential problems. Wed., Fri. & Sun. 10:00 - 17:00 by appointment. Phone: 052-581-0100.

★Free Counseling Service for Refugees & Asylum Seekers 難民相談

Refugee Assistance Headquarters (RHQ) provides a confidential counseling service every Thu. (10:00 - 16:00) at the NIC 3F Info Counter. Reservation required. Inquiries: RHQ, Tel: 078-361-1700 (Website: www.rhq.gr.jp/english).

■NIC End of Year / New Year Holiday Dates

年末年始休館日のお知らせ

The NIC will be closed **from Wednesday 29 December 2021 to Monday 3 January 2022**. We will open for the new year on **Tuesday 4 January** at 9:00. We wish you a safe and happy holiday season, and look forward to seeing you in the new year!

●World Collaboration Festival 2021

ワールド・コラボ・フェスタ2021～発見体験!世界大交流祭～

The annual World Collaboration Festival is an international exchange, international cooperation and multicultural coexistence-themed event where organizations including NGOs, NPOs and public organizations share their activities through stage performances and booths, and will be held online this year.

Nagoya International Center will be participating in stage attractions and with a booth. Instructors from NIC's Classroom for Global Citizens program will share dances and exercise routines from India, Niger and Peru in the stage attraction, 'Let's Ethnic Exercise! Come Together and Dance'. And you can learn about global issues at the NIC booth which looks at the World Terakoya Movement with a video presentation, reports on Terakoya activities, and more.

When: Until Mon. **10 Jan.** (nat. hol.)

Where: Online

Website: <https://www.world-collabo.jp/>

●Children's Story Book Time

外国語で楽しむ絵本の会

Listen to foreign volunteers in the NIC's 3F Library (and occasionally other locations) as they read story books in their own languages from the library's vast collection of international children's books.

Participation is free!

When:

- ① Sun. **16 Jan.** (14:00 - 14:30)
- ② Sun. **30 Jan.** (14:00 - 14:30)
- ③ Sun. **27 Feb.** (14:00 - 14:30)

Where: Nagoya International Center 3F Library

Places: 10 (around 3 people per group, not including infants; first in, first served)

Reservations: Apply by e-mail during the reception period for each session: ①10:00 Tue. 4 Jan. to 12:00 Fri. 14 Jan. ②10:00 Sun. 16 Jan. to 12:00 Fri. 28 Jan. ③10:00 Tue. 15 Feb. to Fri. 25 Feb.

Inquiries / reservations: E-mail: info@nic-nagoya.or.jp;

Phone: 052-581-0100

Staying Up-to-Date with the NIC

Social Media	NIC Website	Evacuation Information
Follow us @the_nic Find us on Facebook	 www.nic-nagoya.or.jp Keep updated on NIC events , subscribe to the NIC Mail Magazine , and browse back issues of the Nagoya Calendar	Should an evacuation advisory be issued for Nagoya City, check the Evacuation Information section on the top page of the NIC website for information in Japanese, English, Portuguese, Spanish, Chinese, Korean, Filipino, Vietnamese, Nepali and easy Japanese. Bookmark https://www.nic-nagoya.or.jp/evacuation/ for quick access to any updates.

●NIC Japanese Class for Children

NIC子ども日本語教室

Learn Japanese skills necessary for school and daily life. For non-native speakers of Japanese aged 6 to 15 (born between Apr. 2, 2006, and Apr. 1, 2015), and junior high school students born before Apr. 2, 2006. (Those attending evening junior high school classes, please see the NIC Japanese Class for High School Students) 40 places; determined on a first-come, first-served basis.

Preference given to residents of Nagoya City and those attending public elementary or junior high schools in Nagoya City.

When: Every Sunday from 16 Jan. to 27 Mar. (10:00 - 11:30) *No class 13 Feb. (10 lessons)

Where: Nagoya International Center 3F Lecture Rooms 1 & 2, 5F Japanese-style Room. *May move online depending on the COVID-19 situation.

Cost: 1,000 Yen for 10 lessons

How to Apply:

- **Residents of Nagoya City, those attending or planning to attend public elementary or junior high schools in Nagoya City:** Apply via the NIC website from Sun. 19 Dec. (from 10:00). Interview: Sun. 9 Jan. (from 10:00) at NIC 4F Lecture Room 3
- **Residents of other municipalities** (if vacancies remain): Apply via the NIC website between 10:00 Tue. 11 Jan. and 17:00 Fri. 14 Jan.

Application form and information can be found at

www.nic-nagoya.or.jp

Inquiries: Contact the NIC Exchange and Cooperation Division on 052-581-5689

●NIC Japanese Class for High School Students

NIC高校生日本語教室

For young non-native speakers of Japanese (born before 1 April 2006) currently attending or aspiring to enter high school and requiring assistance with Japanese language acquisition. The class aims to help students acquire the foundations of Japanese necessary for their studies, to enable them to complete their high school studies and pursue careers.

(Junior high school students, except those enrolled in evening courses, please see NIC Japanese School for Children.)

Applicants and parents must also attend an interview and career support seminar (where they can get information on high schools and going to university, and participate in a workshop to help think about future directions) and make payment on 9 Jan.

When: Every Sunday from 16 Jan. to 27 Mar. (14:00 - 16:00) *No class 13 Feb. (10 lessons)

Where: Nagoya International Center 3F Lecture Room 2. *May move online depending on the COVID-19 situation.

Cost: 2,000 Yen for 10 lessons

Places: 15; Preference given to residents of Nagoya City or those attending high school within Nagoya City. If applications exceed capacity, participants will be determined by interview.

How to Apply: Applications can be made **via the NIC website between 10:00 Tue. 21 Dec. and 17:00 Sat. 8 Jan.**

Interview, payment and Career Support Seminar: Sun. 9 Jan. (12:30 - 15:00) at NIC 4F Lecture Room 3. *Interview may be held online depending on the COVID-19 situation.

Application form and further information can be found at www.nic-nagoya.or.jp

Inquiries: Contact the NIC Exchange and Cooperation Division on 052-581-5689

●NIC Nihongo no Kai Japanese Class for Adults

NIC日本語の会

Learn Japanese language, customs and culture required for everyday life with volunteers. For details of class types, times and capacity, see the NIC website. Depending on the COVID-19 situation, details may change greatly prior to or following commencement of classes. Information will be updated via the website when necessary; please be sure to check.

When: Every Sunday from 16 Jan. to 27 Mar. *No class 13 Feb. (10 lessons)

Where: Nagoya International Center

Cost: 2,500 Yen for 10 lessons (plus 500 - 1,000 Yen for materials)

Places: 8-18 places available per course; In the event of excess applications, places will be allocated by lottery. Open to non-native speakers of Japanese (excluding elementary & junior high school students) living in Aichi, Gifu or Mie prefectures. Preference given to residents of Nagoya City.

How to Apply: Applications can be made online **via the NIC website from 12:00 Sun. 26 Dec. until 12:00 Fri. 7 Jan., or by visiting NIC between 9:00 and 17:00 Tue. to Sun. between 26 Dec. and 7 Jan.** (*Closed Mondays, 29 Dec. to 3 Jan.) Applicants must attend an **interview** on Sun. 9 Jan. (time will vary depending on class) at NIC 5F Conference Room.

Further Details: See the NIC website (www.nic-nagoya.or.jp) or contact the Exchange and Cooperation Division on 052-581-5689

●Volunteer Seminar - Supporting Foreigners During Disasters

災害時外国人支援ボランティア研修

Through a lecture and group work, participants in this seminar (conducted entirely in Japanese) will think about important points to keep in mind to help foreign and Japanese residents avoid issues at shelters, etc. when a disaster occurs, and also learn about the fundamental role and process of activities providing support to foreigners. Open to NIC Disaster Language Volunteers and anyone involved in disaster preparedness and support activities for foreigners in Nagoya City; Limited to 60 places, determined on a first-in, first-served basis. Reservations required.

When: Sat. 15 Jan. (13:00 - 16:00)

Where: Nagoya International Center Annex Hall

Cost: Free

Reservations: Visit or contact the NIC Exchange and Cooperation Division **from Tue. 7 Dec.** (from 10:00).

Phone: 052-581-5689; **E-mail:** seminar-vol@nic-nagoya.or.jp;

Website: www.nic-nagoya.or.jp

●Peer Support Salon ピアサポートサロン

Share your concerns and anxieties about raising children in the age of COVID-19 at this salon for parents (non-Japanese and Japanese) raising children in families with multicultural backgrounds. Interpreting will be available in English, Portuguese, Spanish, Chinese, Vietnamese and Nepali. Maximum 10 parents per session.

When: ①Sun. 30 Jan. (10:00 - 11:30) – Parents of pre-school-aged children aged 3 and over ②Sun. 27 Feb. (10:00 - 11:30) – Parents of junior or senior high school-aged children

Where: Nagoya International Center 3F Library Interaction Space (交流スペース)

Cost: Free

Reservations: Via the NIC website (www.nic-nagoya.or.jp), or call or visit the NIC Information Counter.

Inquiries: **Phone:** 052-581-0100;

E-mail: info@nic-nagoya.or.jp

●Registration & Information Session for Language Volunteers & Disaster Language Volunteers

語学・災害語学ボランティア登録説明会

A registration and information session will be held for Language Volunteers and Disaster Language Volunteers. For details of volunteer activities and requirements for registration, please see the NIC website. Those registering as Disaster Language Volunteers will also participate in the Disaster Language Volunteer Training Session.

When: Sun. 6 Feb. (13:30 - 14:30)

Where: Online, or at Nagoya International Center 4F Lecture Room 3 (*Depending on the COVID-19 situation, session may be held online only.)

Reservations: Contact the Exchange and Cooperation Division (via the NIC website, e-mail, phone, or in person) before 17:00, Sat. 5 Feb.

Inquiries: Exchange and Cooperation Division

Phone: 052-581-5689; **E-mail:** vol@nic-nagoya.or.jp

●NIC Free Personal Income Tax Consultations for Foreign Residents

外国人のための税理士による無料税務相談

Foreign residents can take part in this practical seminar to learn how to fill out their *kakutei shinkoku* paperwork, followed by a 15-minute individual consultation with a certified public tax accountant. (Please note that income tax return forms cannot be completed or submitted during this event.) Interpreting available in English, Portuguese, Spanish and Chinese.

When: Sat. 19 Feb. (13:30 - 16:30)

Where: Nagoya International Center Annex Hall (*May be held online depending on the COVID-19 situation.)

Places: Seminar – 50 places; Individual consultations – 15 places

Reservations: Apply via the online form at www.nic-nagoya.or.jp **from 10:00 Tue. 25 Jan. until places are filled.** Places determined on a first-come, first-served basis.

Inquiries: NIC Information Counter, phone: 052-581-0100

■Final tax return / Kakutei shinkoku

確定申告

Kakutei shinkoku (確定申告) is the declaration of your entire income for the period from 1 January to 31 December of the previous year, along with the amount of tax payable on that income as calculated by you, which you make to your regional tax office.

Those required to file a final tax return include those who are self-employed, those who have been working in Japan yet did not undertake a **year-end adjustment (nenmatsu chōsei / 年末調整)**, those who received income from two or more employers (for example, a language teacher who taught at two or more schools), and so on. People who left their previous job and did not return to employment after that are also required to file a final tax return.

Most wage earners are not required to file a final tax return because the calculation and payment of income taxes are completed through the year-end adjustment by the person paying the salary. For information on wage earners who must file a final tax return, see the National Tax Agency website (<http://www.nta.go.jp/english/taxes/individual/12018.htm>).

If you are going to file a final tax return and have received an income **tax withholding statement (or gensen chōshū hyō / 源泉徴収票)**, a slip of paper about the size of a postcard, from your employer, please take care not to lose this, because you will need it for your final tax refund.

Also, if you paid more than 100,000 yen in medical expenses last year, by completing a final tax return you may be able to receive a refund of excess tax paid.

Your final tax return filed this year will be for **income earned from 1 January to 31 December of 2021, or Reiwa 3**. The period for filing your final tax declaration is **from Wednesday 16 February to Tuesday 15 March**.

What you need:

If you need to submit a final tax return, make sure you have:

1. Income Tax Withholding Statement (*gensen chōshū hyō / 源泉徴収票*) and all other paperwork which shows any withheld tax
2. Resident Card (*zairyū kōdo / 在留カード*) / Passport
3. Bank account passbook (*tsūchō / 通帳*)
4. Seal (*inkan / 印鑑*)
5. Those who wish to apply for a deduction for dependents outside of Japan (see **Exemption for dependents, etc., for relatives living outside Japan** at <https://www.nta.go.jp/english/taxes/individual/12016.htm>):
 - Evidence to support your relationship with the dependent (birth / marriage certificate etc.)
 - Proof of remittance (transfer slips etc.)
6. Those who wish to apply for medical expense deductions are required to bring their receipts issued by the respective medical institution/s.
7. Those enrolled in National Health Insurance or Social Insurance are required to bring proof of payment of all premiums.
8. Those who purchased a home in Japan using a loan, should ask their financial institution for a Home Loan Year-end Balance Certificate (*jūtaku rōn nenmatsu zandaka shōmeisho / 住宅ローン年末残高証明書*).

*Other items may be required depending on your circumstances.

★**Information on how to complete the income tax return is available in English on the National Tax Agency website at <https://www.nta.go.jp/english/taxes/individual/index.htm>**

NIC Free Personal Income Tax Consultations for Foreign Residents

Nagoya International Center will be holding a seminar on **Sat. 19 Feb.** to help foreign residents learn how to complete the *kakutei shinkoku*.

See page 3 for more information.

■Sunday Service at City of Nagoya Ward and Branch Offices

区役所・支所の日曜窓口

In order to provide greater accessibility to services for residents, service is available at ward and branch offices on predetermined Sundays.

Upcoming Sunday Service dates:

9 Jan. (8:45 – 12:00)

6 Feb. (8:45 – 12:00)

*Please note that dates may be subject to change or cancellation.

Services provided

Service is limited to submission and issuance of documents concerning changing one's residence to or from the City of Nagoya.

*Please be aware that some procedures may not be available. You may be asked to come at a later date for procedures requiring confirmation with other local or national government bodies.

For a list of services available at ward and branch offices on Sunday Service dates, see the NIC website at www.nic-nagoya.or.jp.



■Night, Sunday, & Holiday Emergency Clinics in Nagoya

休日診療所、名古屋医師会急病センター

Did you know that emergency treatment is available when regular medical facilities are closed (on Sundays, national holidays, during the year-end / New Year holiday period, and at night)? Make sure you know where your closest clinic is, just in case. Getting caught out on a Sunday or a holiday can be very stressful if you aren't prepared.



A full list of emergency clinics in Nagoya can be found on the City of Nagoya website at:

<http://bit.ly/emergency-nagoya-clinics>

For information on other clinics in Aichi, contact the **Aichi Emergency Medical Treatment Information Center** (Phone: 052-263-1133).

You can also search for medical facilities on the Center's website at:

<http://www.qq.pref.aichi.jp/>

■Emergency Broadcast Telephone Service

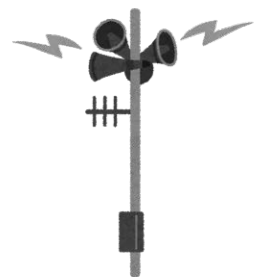
同報無線テレホンサービス

The City of Nagoya's emergency speaker system is used to broadcast emergency announcements such as Evacuation Information and national J-Alert warnings, and may also be used for tests. When announcements are difficult to hear due to weather conditions, or difficult to understand, use your phone and call the number below to check whether what you've heard is a drill, or something urgent.

The service is available in English, Chinese and Korean, in addition to Japanese.

Japanese: 0180-995926 **Chinese:** 052-957-9261

English: 052-957-9260 **Korean:** 052-957-9262



■Living Q & A: A visa for a same-sex spouse

外国人暮らしのQ&A「同性配偶者の在留資格は取得できるか」



I'd like to know, is same-sex marriage recognized in Japan? If a person from a country which recognizes same-sex marriage is living in Japan as a permanent resident, and their spouse is in their home country, is it possible for the spouse to get a visa (status of residence) to live in Japan?

First, to address the question of recognition of **same-sex marriage (dōseikon / 同性婚)**. At present in Japan, same-sex marriage is not seen as legally recognized. While there has been some debate within Japan on the subject, this has not led to official recognition, as a nation, of same-sex marriage.

A number of local (prefectural and municipal) governments have established a '**partnership system (pātonashippu seido / パートナートシップ制度)**' giving official recognition to same-sex couples, but this recognition does not include legal rights and obligations.

Next, as to whether the spouse of a person with the **status of residence (zairyu shikaku / 在留資格)** of **permanent resident (eijūsha / 永住者)** can obtain a status of residence to live in Japan. If the marriage between the couple in question is recognized as legal, then it is possible for the spouse to obtain the status of residence of **Spouse of a Permanent Resident (eijūsha no haigūsha tō / 永住者の配偶者等)** and live in Japan.

As for the application procedure, even if the spouse is not currently in Japan, the permanent resident in Japan can submit an **Application for issuance of a Certificate of Eligibility (zairyu shikaku nintei shōmeisho kōfu shinsei / 在留資格認定証明書交付申請)** to receive a **Certificate of Eligibility (zairyu shikaku nintei shōmeisho / 在留資格認定証明書)**. The permanent resident then sends the Certificate of Eligibility to the spouse, who submits it to a Japanese embassy or consulate in their country. If the status of residence is granted, the spouse will be permitted to enter Japan.

However, in the case of a same-sex couple who have married in a country where same-sex marriage is legally recognized, the spouse would not be granted entry to Japan with the status of residence of Spouse of a Permanent Resident, due to same-sex marriage not being legally recognized in Japan. If the spouse were already in Japan as a **Temporary Visitor (tanki taizai / 短期滞在)**, for example, it may be possible to apply to change one's status of residence to that of **Designated Activities (tokutei katsudō / 特定活動)** to remain in Japan.

In addition, if a Japanese national and a foreign national were to marry in a country which recognized same-sex marriage, the spouse would not be granted a status of residence that acknowledged one's status as a spouse.

For details of status of residence-related procedures, please inquire at your nearest Immigration Services office.



NIC Civic Advisory Service for Foreign Residents - A free civic advisory service for foreign residents is available in person or by telephone at the NIC Information Counter.

Phone: 052-581-0100 E-mail: info@nic-nagoya.or.jp

★See page 2 for Free Legal Consultations, Gyoseishoshi Consultations, and more.

■Read Japanese: O-mamori

日本語を読もう「お守り」

An *o-mamori* (お守り, also お守 and 御守) is an amulet or charm thought to grant the bearer good fortune, good health, or protection.

The *o-* (お or 御) is an honorific prefix, and *mamori* comes from the verb *mamoru* (守る), meaning "to protect".

The first few days of the new year are a time when many people visit a shrine or temple (or both) in a ritual known as *Hatsumōde* (see *Hakken! Nagoya* on page 10). At larger temples and shrines where amulets are sold, many visitors will pick up an *o-mamori* for good luck throughout the coming year.

When choosing which *o-mamori* to buy for yourself or to give to someone, it can be tempting to select an amulet in a favorite color or by some other design element. But *o-mamori* have different blessings that are indicated by what's written on them, or on signs where they are sold.

Here are some common expressions you might find on *o-mamori* that, if memorized, might help you avoid such faux pas as giving your prospective father-in-law a charm to help him through childbirth.



開運 *kaiun* (better fortune)

安産 *anzan* (safe and easy childbirth)

厄除 *yakuyoke* (protection against misfortune, evil)

学業 *gakugyō* (school, studies)

交通安全 *kōtsū anzen* (safety on the road)

合格 *gōkaku* (success [in examinations, etc.])

縁結 *enmusubi* (marriage)

大願成就 *taigan jōju* (realization of great ambition)

子宝 *kodakara* (be blessed with a child)

心身健康 *shinshin kenkō* (health in mind and body)

Many people will also take an old *o-mamori* that has protected them over the previous year (or helped them through a strenuous life event) back to the shrine or temple and give thanks for the divine assistance received.

New at Nagoya Castle & Atsuta Jingū

Nagoya Castle and Atsuta Jingū are two of Nagoya's most well-known attractions. These recently-opened exhibition facilities allow visitors to rediscover and deepen your understanding of these portals to the area's long history, and add to the list of reasons to visit again.

Nishinomaru Okura Johokan

西の丸御蔵城宝館

Located in the Nishinomaru section of Nagoya Castle where a number of rice storehouses previously stood, the Nishinomaru Okura Johokan is an exhibition and storage facility that recreates the exterior of the No. 3 and 4 *kura* (蔵 / storehouse). The name '*Jōhōkan*' (城宝館, lit. castle treasure hall) reflects the facility's purpose as a space for the display of the treasures of the castle, as well as for the sharing of information (情報 / *jōhō*) about Nagoya Castle. Visitors to Nagoya Castle can enjoy discovering more about the castle's history and appeal through the History Information Room, and exhibits of treasures including the wall and screen paintings of the original Hommaru Palace (designated National Important Cultural Assets) in the Exhibition Room.

Exhibition Room

Built for the public display of the Hommaru Palace's Important Cultural Asset-designated wall and screen paintings and other treasures of Nagoya Castle, the Exhibition Room will feature several exhibitions covering diverse themes throughout the year, so that there is always something new to learn about the castle whenever you visit.

History Information Room

Follow the history of Nagoya Castle from its construction through to the present at this hub of Nagoya Castle-related information. With explanations, video presentations and games orientated at younger visitors, both children and adults will have fun as you learn at the best place to start your visit to Nagoya Castle.

Museum Shop

The Museum Shop offers a variety of items, including original items not available anywhere else within the castle grounds. Of particular note are the rice-related products, befitting of the Nishinomaru Okura Johokan's recreated rice storehouse exterior.

Storage Room

Completing the Nishinomaru Okura Johokan is the Storage Room, constructed to provide an optimal environment for the preservation of the priceless collection of Nagoya Castle, including the wall and screen paintings of the Hommaru Palace which have been carefully protected for 400 years (even escaping the wartime firebombing that destroyed the original castle).

When: 9:00 - 16:00 (Nagoya Castle hours: 9:00 - 16:30)

Where: Nagoya Castle (名古屋城), Naka Ward (中区)

Access: A short walk from Shiyakusho (City Hall) Sta. (市役所駅, M07) on the Meijo Subway Line (地下鉄名城線)

Admission: Free with admission to Nagoya Castle - Adults 500 Yen; Residents of Nagoya City aged 65 and over 100 Yen; Junior HS students and younger free.

Website: <https://www.nagoyajo.city.nagoya.jp/>



Images courtesy of Nagoya Castle

A treasure trove of swords - Kusanagi-kan

剣の宝庫 草薙館

Given the fact that Atsuta Jingū serves as a shrine to the sacred sword Kusanagi-no-Mitsurugi (草薙神剣), one of the Three Sacred Treasures that form the Imperial Regalia, it is not surprising that swords have been continuously presented as offerings to the shrine since long ago. Even today, the dedications of swords from donors could be said to indicate the strong reverence towards Atsuta Jingū.

The collection of Atsuta Jingū includes 20 swords designated National Treasures and Important Cultural Properties, and 12 swords recognized as Cultural Properties of Aichi Prefecture. Major sword smithing areas such as Yamashiro, Yamato, Sagami, Bizen, Chikuzen, Mino and Owari are represented, as are the historical sword making eras, from old swords through to modern.

The Kusanagi-kan is a display facility, only possible at Atsuta Jingū, for the exhibition of the shrine's collection of precious swords offered in prayer and gratitude to the deities, with glass showcases allowing visitors to view the exhibits from front and back. Among the permanent exhibits are two *ōdachi* (大太刀, very large long swords) measuring 303cm and 244.6cm in length, known as *Magara-dachi* and said to have been used by Magara Jūrōzaemon, a brave warrior known for his intense exploits during the Battle of Ane-gawa (1570).

Visitors can also view pictures and historical text materials related to swords, and experience the weight of actual Japanese swords (*katana* and *wakizashi*), and replicas of the same length and weight as the two *Magara-dachi* swords, at the Experience Corner.

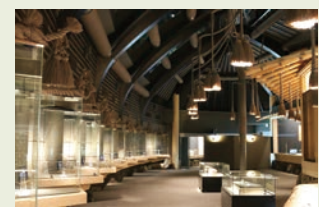
When: 9:00 - 16:30; Last entry 16:00; Combined admission ticket to Treasure Hall available until 15:30.

Where: Atsuta Jingū (熱田神宮), Atsuta Ward (熱田区)

Access: A 3-minute walk from Jingū-mae Sta. (神宮前駅, NH33) on the Meitetsu Nagoya Line (名鉄名古屋本線); or an 8-minute walk from Atsuta Sta. (熱田駅, CA65) on the JR Tōkaidō Line (JR東海道線); or a 7-minute walk from Jingū Nishi Sta. (神宮西駅, M27) on the Meijo Subway Line (地下鉄名城線).

Admission: Kusanagi-kan only - Adults 500 Yen; Elementary & Junior HS students 200 Yen. Combined admission to Treasure Hall - Adults 800 Yen; Elementary & Junior HS students 300 Yen. (Combined admission may be subject to change during special exhibitions, etc. at the Treasure Hall.)

Website: <https://www.atsutajingu.or.jp/jingu/>



Images courtesy of Atsuta Jingū

● Artists of the Tokai Region

所蔵企画展「今見たい 東海ゆかりの芸術家たち」

This exhibition presents works, from the Furukawa Art Museum collection, by artists with connections to Aichi, Gifu and Mie prefectures. Well-known artists include Nakatsugawa (Gifu) native Maeda Seison (前田青邨), and Ichinomiya (Aichi) born Kawai Gyokudō. Other artists featured include Ito Shōha (伊藤小坡), Uda Tekison (宇田荻邨), Kato Eizō (加藤栄三), Hirakawa Toshio (平川敏夫), and the Western-style painter Kitō Nabesaburō (鬼頭鍋三郎). Each was not only an outstanding artist in their own right; they also worked to foster the next generation of artists. See the connections between these Tokai-region artists, their work, and their activities.



Kawai Gyokudō, Gorge in Spring (春峽萬壑), c. 1941

When: Sat. 8 Jan. to Sun. 6 Feb. (10:00 - 17:00; Last entry 16:30.) Closed Mondays.

Where: Furukawa Art Museum (古川美術館), Chikusa Ward (千種区)

Access: A 3-minute walk east from Ikeshita Sta. (池下駅, H14) Exit 1 on the Higashiyama Subway Line (地下鉄東山線); A 5-minute walk west from Kakuzan Sta. (覚王山駅, H15) Exit 1 on the Higashiyama Subway Line.

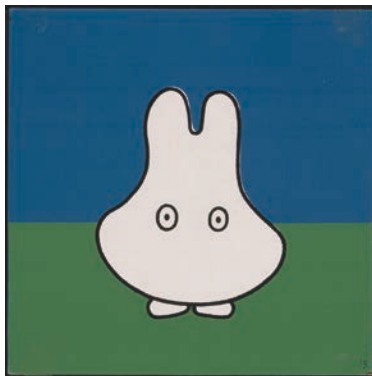
Admission: Adults 1,000 Yen; College and Senior HS students 500 Yen; Junior HS and younger free. Combined admission tickets, discounts available.

Website: <http://www.furukawa-museum.or.jp/> (Japanese)

● Miffy 65

「誕生65周年記念 ミッフィー展」

Miffy (also known in Japan as *Usako-chan*), the creation of the Dutch picture book author and illustrator, Dick Bruna, marked her 65th anniversary in 2020. Bruna's carefully crafted Miffy stories draw the reader in to share a heart-warming time together. Taking "with" as its theme, this exhibition celebrating 65 years since Miffy's creation looks at the story spun by Miffy and those around her through rare original artwork and sketches, Bruna's notes, and more.



Miffy the Ghost, original print artwork, 2001
© Mercis bv

An exhibition where you can learn more, and find more to love, about Miffy and Dick Bruna.

When: Until Sun. 16 Jan. (10:00 - 19:30; 10:00 - 18:00 on 31 Dec. and 16 Jan.) Closed Sat. 1 Jan.

Where: Matsuzakaya Art Museum (松坂屋美術館), Matsuzakaya Department Store Nagoya Store (松坂屋名古屋店) South Building (南館) 7th Floor, Naka Ward (中区)

Access: Matsuzakaya is connected to Yaba-cho Sta. (矢場町駅, M04) Exits 5 and 6 on the Subway Meijo Line (地下鉄名城線); or a 5-minute walk south from Sakae Sta. (栄駅, H10 / M05) Exit 16 on the Subway Higashiyama (東山線) and Meijo Lines

Admission (incl. tax): General admission 1,000 Yen; University & Senior HS students 700 Yen; Junior HS & Elementary students 400 Yen; Pre-school-aged children free; Holders of a Certificate of Disability and one accompanying person free.

Website: <https://bit.ly/3lwCJX8> (Japanese)

Miffy65 official website: <https://miffy65.exhibit.jp/> (Japanese)

● Amazing 3D Trick World - World Masterpiece Exhibition

「不思議な3Dトリックワールド 世界の名画展」

An interactive exhibition where visitors not only view artworks, but can also enjoy posing and taking photos with the exhibits! Position yourself in just the right way, and mysteriously merge with the masterpiece to become part of the art! Take a photo to complete the artwork, and be amazed when you see the result in this highly entertaining exhibition for young and old alike.

When: Until Sun. 6 Mar. (9:00 - 17:00; Last entry 16:30.) Closed Mondays (open 10 Jan.), 28 Dec. to 3 Jan., Tue. 11 Jan., and Thu. 24 Feb.

Where: The World Children's Art Museum in Okazaki (おかざき世界子ども美術博物館), Okazaki City (岡崎市) Okachō Aza-Toriido 1-1 (岡町字鳥居戸1番地1)

Access: Approximately 5 minutes by taxi from Miiai Station (美合駅, NH11) on the Meitetsu Nagoya Line (名鉄名古屋本線).

Admission: General admission (Senior HS students and older) 500 Yen; Junior HS and Elementary school students 100 Yen. Holders of a Certificate of Disability and one accompanying person free upon presentation of Certificate.

Website: <https://bit.ly/2ZNA8JM> (Japanese)



Other Current Exhibitions

● A Tale of Cups and Saucers

「優美な曲線から歴史が伝わる カップ&ソーサー物語」

When: Until Mon. 10 Jan. (nat. hol.) (10:00 - 17:00; Last entry by 16:30) Closed Mondays (or the following business day if it falls on a national holiday), 27 Dec. to 3 Jan.

Where: Yokoyama Art Museum (横山美術館), Higashi Ward (東区)

Website: <https://www.yokoyama-art-museum.or.jp/> (Japanese)

● The Maze of Time and the History of Roof Tiles - The World of Kagawa Gentaro

「時の迷路と瓦の歴史 ～香川元太郎の世界～」

When: Until Sun. 16 Jan. (10:00 - 17:00; Ticket sales close 16:30.) Closed Mondays, Tuesdays (open Mon. 10 Jan. [nat. hol.]), Mon. 27 Dec. to Tue. 4 Jan., Wed. 12 Jan.

Where: Kawara Museum of Takahama City, a Hometown of Ceramics (高浜市やきものの里 かわら美術館), Takahama City (高浜市)

Website: <http://www.takahama-kawara-museum.com/> (Japanese)

● Special Exhibition: Taiga and Buson

特別展「大雅と蕪村—文人画の大成者」

When: Until Sun. 30 Jan. (9:30 - 17:00; Last entry 30 minutes before closing.) Closed Mondays (open 10 Jan.), Mon. 27 Dec. to Mon. 3 Jan., Tue. 11 Jan., and the 4th Tuesday of the month (25 Jan.).

Where: Nagoya City Museum (名古屋博物館), Mizuho Ward (瑞穂区)

Website: <http://www.museum.city.nagoya.jp/>

● POSITION 2021-2022 - Nagoya Contemporary Art Exhibition

「現代美術のポジション 2021-2022」

When: Until Sun. 6 Feb. (9:30 - 17:00; 9:30 - 20:00 on Fridays; Last entry 30 minutes before closing.) Closed Mondays (open 10 Jan.), Wed. 29 Dec. to Mon. 3 Jan., Tue. 11 Jan.

Where: Nagoya City Art Museum (名古屋美術館), Naka Ward (中区)

Website: <http://www.art-museum.city.nagoya.jp/>

● Special Exhibition: Tyrannosaurus Exhibition - T. rex, the Amazing Carnivore

特別展「ティラノサウルス展～T.rex 驚異の肉食恐竜～」

When: Until Sun. 13 Feb. (9:30 - 17:00; Last entry 16:30) Closed Mondays (open 10 Jan.), the third Friday of the month, 29 Dec. to 3 Jan., and Tue. 11 Jan.

Where: Nagoya City Science Museum (名古屋科学館) Science and Technology Building (理工館) B2F Temporary Exhibition Hall (イベントホール), Naka Ward (中区)

Exhibition website: <https://t-rex-nagoya.com/> (Japanese)

Website: <http://www.ncsm.city.nagoya.jp/>

●Spectacular! Nagoya's Golden Era of Mosaic Murals

「壮観!ナゴヤ・モザイク壁画時代」

In the days of rapid economic growth, mosaic murals bloomed in Nagoya and its surroundings. Many murals have been lost over the past half century as buildings have been rebuilt, but those surviving still now retain their original splendor.

This exhibition features murals created in Nagoya's golden era of mosaic murals from the late 1950s to 1970s. Photographs of 17 exquisite murals will be displayed along with sections of actual murals: one from the former Chunichi Building, and two murals recently acquired by INAX Museums - the lobby murals of the former Hotel Nagoya Castle building, and the former Kagome Building, both of which will be shown for the first time. In every case, the murals astonish us with the beauty of their materials, their masterful handling of color, and their detailed handiwork.

A precious opportunity for contact with the rich world of mosaic murals - a fascinating aspect of Nagoya.

When: Until Tue. **22 Mar.** (10:00 - 17:00; Last entry 16:30) Closed Wednesdays (open if Wednesday is a national holiday), 27 Dec. to 5 Jan.

Where: INAX Museums (INAXライブミュージアム) Clay Works (土・どろんこ館) Exhibition Room (企画展示室), Tokoname City (常滑市)

Access: From Tokoname Sta. (常滑駅, TA22) on the Meitetsu Tokoname Line (名鉄常滑線), take the Chita Bus (知多バス) bound for Chita Handa Eki (知多半田駅) to INAX Raibu Myuujiamu-mae (INAXライブミュージアム前) stop, from which the venue is a 2-minute walk.

Admission: General admission 700 Yen; Senior HS & University students 500 Yen; Elementary & Junior HS students 250 Yen. Discounts available.

Website: <https://livingculture.lxil.com/en/>



●Who is Banksy?

「バンクシーって誰?展」

This ambitious exhibition features the masterpieces from the internationally popular The Art of Banksy Exhibition, presenting the works from a new perspective for Japan. In addition to prized original works from private collections, the show focuses on the artist's main battleground: the street. Experience the works in the streetscapes where they originally appeared, in movie set-like arrangements recreated as only a TV station can.

The successor to such street art and contemporary art greats as Haring and Basquiat, Banksy is a groundbreaking pioneer garnering attention all over the world. Don't miss this rare opportunity for people of all ages to enjoy learning more about why Banksy does what he does.

When: Until Sun. **27 Mar.** (10:00 - 18:00; 10:00 - 20:00 on Fri. & Sat.; 10:00 - 17:00 Sat. 22 Jan. Last entry 30 minutes before closing.) Closed 31 Dec. to 2 Jan., and 17 Jan.

Where: Global Gate 3F garage NAGOYA (ガレージ名古屋) & 1F Atrium (アトリウム), Nakamura Ward (中村区)

Access: A 2-minute walk east from Sasashima-raibu Sta. (ささしまライブ駅, AN02) on the Aonami Line (あおなみ線); or a 15-minute walk south from Meitetsu Nagoya Sta. (名鉄名古屋, NH36) Central Exit (中央改札口) on the Meitetsu Nagoya Line (名鉄名古屋本線).

Admission: Date / time designated - General admission 2,000 (2,200) Yen; University & Senior HS students 1,800 (2,000) Yen; Junior HS & Elementary students 1,300 (1,500) Yen. Prices in () are for admission on Sat., Sun. and national holidays. See website for details on how to purchase tickets.

Website: <https://www.ctv.co.jp/whoisbanksy/index.html> (Japanese)



●The 21st Seto no O-Hina Meguri

第21回陶のまち 瀬戸のお雛めぐり

Famed for its ceramics, Seto City is hosting its 21st annual *hina* doll-themed event. A four-meter tall "Hinamid" (*hina* pyramid), consisting of around 1,000 individual glass and ceramic *hina* dolls, is on display at the Seto-Gura, *hina* dolls adorn the surrounding shopping district, and the town is colorfully decorated.

Visitors can enjoy activities such as making a Seto ware *hina* doll, enjoy special *o-hina* lunches and sweets, and much more.

When: Sat. **29 Jan.** to Sun. **6 Mar.**

Where: Seto-Gura (瀬戸蔵) and surrounding areas in Seto City (瀬戸市)

Access: A 5-minute walk from Owari Seto Sta. (尾張瀬戸駅, ST20) on the Meitetsu Seto Line (名鉄瀬戸線)



Photo courtesy of Seto City Marutto Museum / Tourism Association

●Ôsu en Fes vol.8

おおすenフェス vol.8

en Fes is an event for all lovers of handmade craft items, both producers and fans alike, and a great opportunity to not only pick up some uniquely original items but also to meet and talk to the makers. There'll also be live painting at several booths. You can also vote for your favorite handmade item, and get a chance to win prizes when you spend over 500 Yen.

When: Sun. **30 Jan.** (11:00 - 15:00)

Where: Nagoya Kigyô Fukushi Kaikan (名古屋企業福祉会館) 6F Hall (ホール), Naka Ward (中区)

Access: A 5-minute walk east from Osu Kannon Sta. (大須観音駅) Exit 2 on the Subway Tsurumai Line (地下鉄鶴舞線)

Admission: 500 Yen (includes 300 Yen in coupons)

Website: <http://abc500en.jp/osuenfes/osuenfes.html> (Japanese)

■Expressways are limited-access roads

高速道路は自動車専用道路です

This sign indicates that an **expressway** (*kōsoku dōro* / 高速道路) is ahead.

The entry of motorbikes (less than 125cc, e.g. motor scooters or *gentsuki* / 原付), bicycles and pedestrians to expressways is prohibited by law.

Around half of the incidences of mistaken entry to the Nagoya Expressway involve riders of motorbikes less than 125cc.

Around 30 percent of mistaken entry to expressways is caused by smartphone map apps.

To prevent yourself mistakenly entering an expressway, check your map app's settings, and pay attention to road signage.

For riders of motorbikes less than 125cc:

- ①Select driving mode.
- ②Change your route option settings to avoid highways (expressways).

For riders of bicycles:

Select cycling mode.



■COVID-19 Vaccine Q & A

コロナワクチンQ&A



For people who have not received a vaccination

Q. Is the vaccine really effective?

A. Clinical trials indicate vaccines are highly effective in preventing the onset of illness, and it is anticipated that they will be effective in preventing the spread of infection and preventing severe illness.

Q. Where can I get vaccinated?

A. Individual vaccinations are available at medical facilities (hospitals / clinics). Check the hospitals / clinics where the vaccination can be administered on the City of Nagoya website, and contact the facility directly to make a reservation. (Residents who have turned 12 years old will be sent a vaccination coupon at the beginning of the month following their birth month.)

Q. People on social media are saying the vaccine is dangerous. Is it?

A. There is a lot of inaccurate information out there that has no scientific basis, so caution is advised. Don't let yourself be led astray by rumors. Make sure your decision is based on information, based on science, from official sources.

For people who have already been vaccinated

Q. Can you still get infected even if you've been vaccinated?

A. Around 7% of the new infections reported in Nagoya City in September 2021 were breakthrough infections. A breakthrough infection is when infection occurs in a person who has received two doses of the vaccine, and two weeks (thought to be sufficient time to develop immunity) have passed since the second dose.

*Many breakthrough infection cases involve prolonged close contact with people at home, in the workplace, etc.

Vaccination is not a 100% guarantee against infection.

Be sure to keep taking measures to protect yourself from infection.

- Wear a mask, wash hands regularly
- Disinfect commonly-used surfaces and spaces
- Regularly ventilate rooms
- Avoid crowded conditions, close contact, closed spaces with poor ventilation



Stop COVID-19-related discrimination

Vaccination is not compulsory, and vaccinations are administered with the recipient's consent. Please take care not to pressure coworkers and others around you to get vaccinated, and avoid discriminatory treatment of those who have not been vaccinated.

Inquiries:

City of Nagoya COVID-19 Vaccine Call Center

Phone: 050-3135-2252 (9:00 - 17:30 weekdays)

■COVID-19 Vaccine Booster Shot (3rd Dose) 新型コロナウイルスワクチン追加接種(3回目接種)について

The effectiveness of COVID-19 vaccines can decrease over time, even in those who have already received two doses. A third vaccination will be made available to those who for whom at least 8 months have already passed since being administered the second dose. You will need to make a reservation to receive a vaccination, and a vaccination coupon will be required to make a reservation. Eligible residents will be sent a coupon for the third vaccination to their registered address as their vaccination period approaches. Detailed information will be provided via the pamphlet to be sent with the vaccination coupon, and via the City of Nagoya website.

City of Nagoya COVID-19 Vaccine Call Center - Phone: 050-3135-2252 (9:00 - 17:30 weekdays)

City of Nagoya official website: <https://bit.ly/3C8ti5F> (Japanese)



City of Nagoya website

★People in the following situations will need to apply to be issued a vaccination coupon:

- You received the second dose outside Nagoya City, and later moved to Nagoya City
- You received the first two doses overseas *
- You received one dose overseas and one dose in Japan *
- You received two doses in Japan, but the City of Nagoya is unable to confirm your prior vaccination due to an error in registration on the Vaccination Record System, etc.
- The address on your vaccination coupon is not the address where you are registered as a resident
- You received two doses under a COVID-19 vaccination program for Japanese living abroad *
- You received two doses as an employee of United States Forces Japan *
- You received two doses as part of clinical trials for a pharmaceutical manufacturer *
- Persons other than those listed above who are eligible to receive a third dose but have not received a vaccination coupon

*Applicable only to persons who have received COVID-19 vaccines manufactured by Pfizer, Takeda/Moderna, or AstraZeneca.

★See the NIC website at <https://bit.ly/3GEY3BR> for further details.

■Examination and Consultation Center (Call Center) 受診・相談センター

If you have symptoms such as a fever, and are worried that you may have COVID-19, please consult your regular doctor or local clinic by phone first. Please do not go directly to the clinic without consulting staff in advance.

If you do not have a regular doctor or are unsure which medical clinic to consult, please contact the Nagoya City Examination and Consultation Center, whose staff will direct you to a medical facility where you can be examined and tested.

Phone: 052-249-3703 (24 hours); Fax: 052-265-2349

E-mail: nagoya_jyushinsoudan@medi-staffsup.com (Japanese)



Hakken! NAGOYA

Discover Nagoya and Japanese culture

Hakken! NAGOYA is a publication compiled by Nagoya International Center volunteers. *Hakken* means "discover" in Japanese. Whole issues are available on the NIC website.

People also often draw fortune slips called *o-mikuji* (おみくじ) to tell their fortune for the year. It is common to tie the *o-mikuji* to the branch of a tree in the shrine or temple grounds.



Hatsumode (初詣)

Have you ever heard of *Hatsumode* (初詣/はつもうで)?

Hatsumode is the first visit to a shrine or temple at the beginning of a new year to pray for good luck for the year ahead.

Throwing a coin into the wooden box in front of the main hall, people express thanks and pray for good health, safety and prosperity during the year. Many people buy *o-mamori* (good luck charms/talismans) for good health or traffic safety. They also write their wishes for the year on wooden plaques called *ema* (絵馬) and hang them up in the grounds of the shrine or temple.



Popular *Hatsumode* spots in Nagoya include Atsuta Shrine (熱田神宮), Osu Kannon Temple (大須観音) and Higashi Betsuin Temple (東別院), which attract crowds of visitors. You can also visit your neighborhood shrine or temple. Everyone is welcome regardless of creed.

Check out whole issues of *Hakken! NAGOYA*, available to download on the NIC website at www.nic-nagoya.or.jp !



Movie Theaters & Upcoming Movies

(May be subject to change or cancellation without notice)

A NAGOYA STATION AREA

1. MIDLAND SQUARE CINEMA (052)527-8808☆
2. MIDLAND SQUARE CINEMA 2 (052)527-8808☆
3. CINEMA SKHOLE (052)452-6036☆
4. 109 CINEMAS (052)541-3109

B FUSHIMI AREA

5. MILLION MOVIE THEATER (052)212-2437☆

C SAKAE, SHIN-SAKAE, YABA-CHO AREA

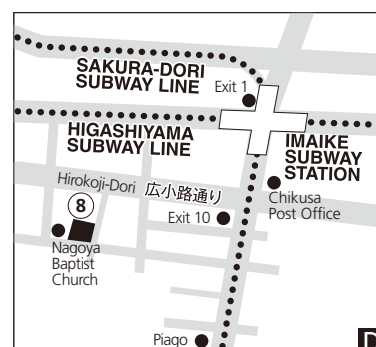
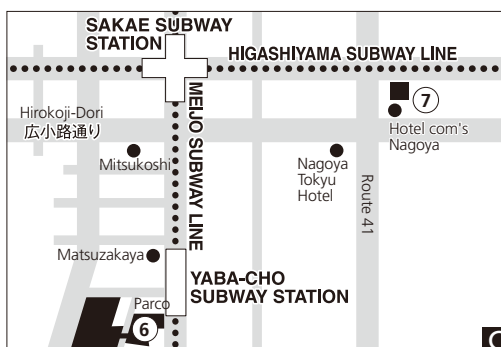
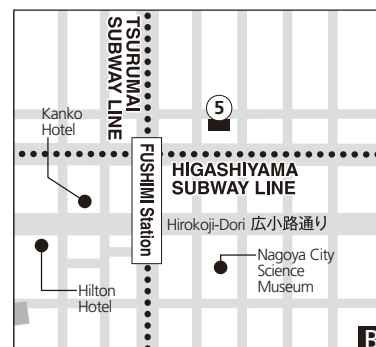
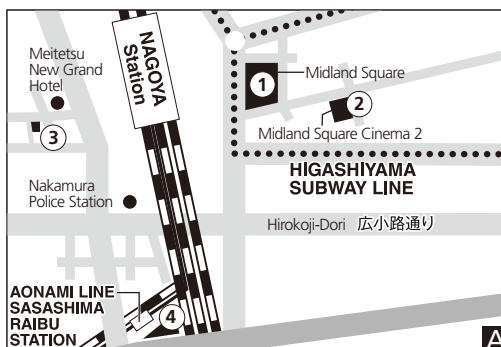
6. CENTURY CINEMA (052)264-8580★
7. Meien CINE SALON 1-2 (052)931-1701☆

D IMAIKE AREA

8. NAGOYA CINEMATHEQUE (052)733-3959●

Admission discount services:

- ★ Foreign students (Must present residence card and student ID)
- ★ Women ¥1,100 on Wednesdays
- ★ Women ¥1,100 on Thursdays
- Women ¥1,000 on Thursdays



Listed below are foreign language movies being shown in Nagoya theaters. Listings are subject to change. Movies are usually shown in their original language with Japanese subtitles; some showings may be dubbed in Japanese for younger audiences. Numbers in <> after the movie listing correspond to the above location guide.

★ **SPIDER-MAN: NO WAY HOME** スパイダーマン:ノーウェイホーム
Tom Holland, Zendaya / dir. Jon Watts / from Jan. 7 <1><2><4>

★ **HOUSE OF GUCCI** ハウス・オブ・グッチ
Lady Gaga, Adam Driver / dir. Ridley Scott / from Jan. 14 <1><2><4><5>

★ **CRY MACHO** クライ・マッチョ
Clint Eastwood, Eduardo Minetti / dir. Clint Eastwood / from Jan. 14 <1><2><4>

★ **I'M YOUR MAN** アイム・ユア・マン 恋人はアンドロイド
Maren Eggert, Dan Stevens / dir. Maria Schrader / from Jan. 14 <1><2>

★ **SILK ROAD** シルクロード.com 史上最大の闇サイトー
Jason Clarke, Nick Robinson / dir. Tiller Russell / from Jan. 21 <1><2>

★ **THE MISFITS** ザ・ミスフィツ
Pierce Brosnan, Rami Jaber / dir. Renny Harlin / from Jan. 21 <1><2>

★ **RIDERS OF JUSTICE** ライダーズ・オブ・ジャスティス
Mads Mikkelsen, Nikolaj Lie Kaas / dir. Anders Thomas Jensen / from Jan. 28 <1><2>

★ **CRESCENDO** クレッシェンド 音楽の架け橋
Peter Simonischek, Bibiana Beglau / dir. Dror Zahavi / from Jan. 21 <1><2>

★ **I STILL BELIEVE** 君といた108日
K.J. Apa, Britt Robertson / dir. Andrew Erwin / from Jan. 2 <3>

★ **CODA** コーダ あいのうた
Emilia Jones, Ferdia Walsh-Peelo / dir. Sian Heder / from Jan. 21 <4>

★ **RESIDENT EVIL: WELCOME TO RACCOON CITY**
バイオハザード: ウェルカム・トゥ・ラクーンシティ
Kaya Scodelario, Hannah John-Kamen / dir. Johannes Roberts / from Jan. 28 <4>

★ **BLACK BOX** ブラックボックス: 音声分析捜査
Pierre Niney, Lou de Laage / dir. Yann Gozlan / from Jan. 21 <5>

★ **EL PLANETA** エル プラネタ
Amalia Ulman, Ale Ulman / dir. Amalia Ulman / from Jan. 14 <6>

★ **SECRETO MATUSITA** シークレット・マツシタ / 怨霊屋敷
Bruno Espejo, Lupita Mora / dir. Dorian Fernández-Moris / from Jan. 28 <6>

This is a free service provided for volunteer & community-focused notices. See <https://bit.ly/2ZqD6lf> for guidelines and to submit a notice.

Cultural Learning Opportunities

★**Hana-no-ki-kai** - Ikebana classes every 4th Sun. of the month 13:00 - 16:00 near Kanayama Sta. Only actual cost charged for materials. Reservations - Phone: 0562-93-0310; Fax: 0562-93-5214 (Ms. Suzuki)

★**Ikebana Communications** - Enjoy your stay in Japan & make new friends by learning Ikebana. We meet every 2nd & 4th Sat. 14:00 - 20:00 near Nagoya Int'l Center Bldg. Fee 1400 Yen / class. Call Mimi 090-4867-4264, Ms. Wakita 052-581-6071 or Miki 090-7954-2892

Updated Japanese Home Cooking Class, Ikebana & Tea Ceremony in English - Learn to use the different sauces & spices common to traditional Japanese home-cooked dishes. Flower arranging & tea ceremony lessons available; private or group lessons OK. Call 090-7431-4428 (Hideko).

★**Experience Japanese culture by learning Ikebana** - Basic lessons with demonstration in English. 2000 Yen / lesson (flower & room fee). Arimatsu Community Center (3 mins. from Meitetsu Arimatsu Sta.) 2nd / 4th Sat. 10:00 - 12:00. Email: info@ikebanaworkshop.com or call: 080-5448-0015 (Kayoko)

★**Let's Enjoy Japanese Kimono** - Try on a variety of kimonos and learn about Japanese culture. Every 2nd Sat., 13:00 - 15:00, at Atsuta Shogai Gakushu Center (a 15 min. walk from Subway Hibino Sta. Exit 1.) 500 Yen with tea. Phone/fax: 052-681-9414 (Yoshida YYclub)

★**Japanese traditional brush calligraphy** - Try Japanese traditional calligraphy. Any time from 10:00 to 17:00. Please contact us one day prior to your visit. 2 hours. Venue 3-minute walk from Hisaya-odori Sta. Ongoing lessons available. Contact: info@houkoan.com; Phone: 070-8310-0420

Japanese Language Classes

Updated Aichi Nihongo no Kai - Mon. 10:00-11:30 at Nagoya Int'l Center-near Kokusai Center Sta. Exit 2. 17 Jan.-14 Mar. 9 lessons, 2,700 Yen total/term. Handouts 100 Yen/term. Join any time. Call 090-3852-8479 (Keiko); or e-mail antoon27@yahoo.co.jp (Kumiko)

Updated "A-Ka-Sa-Ta-Na" Japanese Conversation Class - Thu. in-person lessons 13 Jan.-17 Mar. 10:30-11:30, free / 10 lessons. Aichi Int'l Plaza, 2 blocks west of Subway Shiyakusho Sta. (Meijo Line), (poss. online depending on COVID-19 situation); Mon. free conversation online lessons (Zoom) 17 Jan.-14 Mar. 10:30-11:30, free / 9 lessons; Join anytime! See website for details: <https://www.aloenagoyavol.com/>; E-mail: akasatanaaloe@gmail.com

★**Hills Nihongo de Walk** - Japanese lessons available at Yumeria Tokushige 3F above Tokushige Sta. on Sakura-dori Line. On Fri. at 18:30 to 20:10. Beginners to Advanced. Join anytime. Contact: ankumi27@hotmail.com (Kumiko); 050-5585-0621 (Muto). <http://hillsnihongo.wix.com/hills-nihongo-class>

Updated Hoshigaoka Nihongo Kyoushitsu - Tue. 10:00-11:30, 5 Oct.-15 Mar. Hoshigaoka Community Center 1F (3 min. walk from subway Hoshigaoka Sta. Exit 4) Beginner & Intermediate Class. Inquiries - E-mail: hoshigaoka26kai@gmail.com; Phone: 080-4547-9290; Website: <http://nirokukai.com>

★**Iroha Nihongo no Kai** - Beginner class Thu. 10:15-11:45 at Nadya Park 6F (Nagoya-shi Shiminkatsudo Suishin Center) 7-min. walk from Sakae Sta., 5-min. walk from Yaba-cho Sta. Join anytime. Phone: 090-6595-1578 (Yumi) 090-4265-3033 (Ogata) E-mail: irohanihongonokai@yahoo.co.jp / Website: irohanihongonokai.web.fc2.com

Meeting & Activities

★**Amnesty International Nagoya Multicultural Group** - Meetings are held in principle every 4th Saturday at various locations in Nagoya. Contact us via e-mail: amnestynagoyamcg@gmail.com or on Twitter: @aimcg_nagoya

★**English Alcoholics Anonymous meeting** - Sat. 19:30 & Sun. 19:00 at the Mikokoro Catholic Center. Call 090 9938 0596 if you feel you have a problem with alcohol.

★**Nagoya Language Exchange** - Japanese-language and English-language learners meet once a month near Nagoya Sta. We chat and enjoy practicing English/Japanese conversation as well as learning cultures. Let's learn language together! Website: <http://facebook.com/mamilearnersspace/>

★**NAGOYA PREGNANCY GROUP** - Meets monthly in Chikusa. Join us if you are pregnant, TTC or have a baby under 1 year old. Information about birthing, hospitals, breastfeeding and support in Nagoya. Community and friendship for mums. Contact Michelle Suzuki, Birth Doula for details at nagoyadoula@gmail.com

★**SHONAI FC** - Free international-community-based football / soccer, every Sunday 16:00 at Shonai Ryokuchi Koen, (Tsurumai Line) All welcome! More info at <https://www.facebook.com/shonai.fc> or just come down!

★**Workshop for English teachers** - We have bi-monthly workshops for English teachers at Nagoya International Center. Any nationalities welcome. We also have fun gatherings occasionally. Please check our website for upcoming events. Let's get together! Website: <https://etjaichi.wixsite.com/website>

Family Groups

★**Chayagasaka Cooperative English Playgroup** - for children 0 to 6 with at least one (English speaking) non-Japanese parent. Wednesday mornings near Chayagasaka Sta.; 500 yen per session. Games, songs, snacks and crafts. Email: chayagasakaplaygroup@gmail.com Website: http://groups.yahoo.com/group/chayagasaka_playgroup/

★**Bilingual Nagoya** - English class for bilingual kids. Elementary 1st grade through junior high. Meets every Sat. morning in Chikusa-ku. Next step up from the Chayagasaka playgroup. For more information contact: bilingualnagoya@gmail.com

★**Takaoka English Playgroup** - Meets on random Sundays from 9:30 - 11:30 at Takaoka Children's Center (Jidokan). All foreign & bi-cultural families, returnees welcome. Games, songs, crafts for children 0 to 6. 300 Yen per family, free the first time. E-mail: takaokaenglishplaygroup@gmail.com

Places of Worship

★**Anglican / Episcopal Church in Japan** - English services every 4th Sun. 14:30 at Nagoya St. Matthew's Cathedral, a 5-min walk from Gokiso Sta. Exit 4 (Tsurumai/Sakuradori Lines) E-mail: office.chubu@nssk.org; Phone: (052)858-1007; Website: <https://nssk-chubu.org>

★**Faith Charismatic Church** - Please come fellowship and worship with us, Faith Charismatic Church, a bible believing Christian Church, every Sunday at 10:00. Venue: Nagoya City Minami Life Long Learning Center, near Kasadera Sta. Call Pastor Bede 080-6980-6777

★**Indonesian Catholic Community** - Indonesian Catholic Community in Nagoya hosts Indonesian mass once a month (every 4th Sun.) in Johokubashi Catholic Church at 12:30, 8 minutes' walk from Meijo Koen Sta. Exit 1. For more details please email: katolknagoya@yahoo.com

★**Inter-Christian Fellowship Nagoya (Church of the Nazarene)** - Christian church for Filipinos in Japan. Nagoya-shi Midori-ku Aibarago 2-1809 Mezon SK 101. Contact Jun Ooka, phone: 070-4388-0535

★**Nagoya English Fellowship** - inter-denominational fellowship with English Worship Services every Sun. from 10:30. Bilingual messages every 3rd and 4th Sun. Sunday School available. Contact Willie at 090-2579-1007 or nefbulletin@gmail.com

★**Nagoya Mosque** - hosts Muslim Fri. Prayers & is open for five-time prayers Khutba at 12:30 & Prayer at 12:40. Halal meat & Islamic literature are also available. Honjin Sta., Exit 3 Call 052-486-2380 Website: <http://nagoyamosque.com>

★**Nagoya Port Mosque** - Fri. Prayer Khutba from 12:30. Open for five time prayers, every Sat. special speech & dinner after Isha Prayer. Children's Arabic lessons Sat. 15-minute walk from Aonami Line Inaei Sta. Nagoya, Minato-Ku, Zennan-Cho 33-3. Phone: 090-3251-5381

★**Nagoya Union Church** - Join with Christians from many countries for worship & fellowship in English. Bible studies, small groups and Sunday school also available. Sunday worship at 16:00 at Kinjo church near Shinsakae and Takaoka stations. Email: sun4pm@nagoyaunionchurch.com Website: <http://www.nagoyaunionchurch.com/>

★**New Testament Grace Church** - An interdenominational Bible-based spirit-filled focus on Jesus' finished work and His Grace, to see people set free from addiction and find rest. 5 min. from Nagoya Sta. Worship Service Hour - Sun. 14:00 - 16:00 Friendly atmosphere. <https://www.ntgrace.com/>

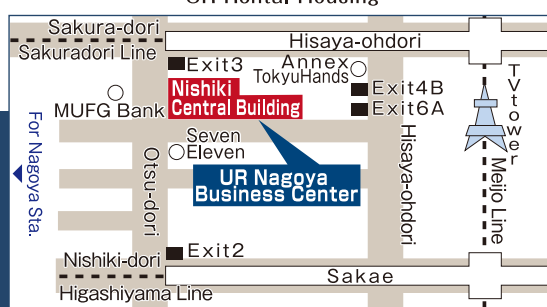
★**The IMMANUEL Christian Fellowship** - evangelical fellowship welcomes Filipinos and English-speaking people. Lively praise & worship songs, Tagalog & English sermon and Bible story lessons for Japanese speaking kids. Worship service 13:00. Contact Pastor Solito at 090-8540-8260 or visit www.icfnagoya.org

★**The Japan Mosque** - We warmly welcome all visitors from any background who wish to learn about Islam. The doors of our mosque are open to everyone. Phone: 0120-119-770; Website: www.alislam.jp

FOR RENT

UR UR賃貸住宅

UR Rental Housing



- 1 Key money **0yen**
- 2 Commission fee **0yen**
- 3 Renewal fee **0yen**
- 4 No guarantor required **0yen**

UR Nagoya Business Center

Nishiki Central Building

052-968-3100

- Business Hours / am9:30 ~ pm6:00
- Closed / We are closed during the end and the beginning of the year

《Access》 3-5-27 Nishiki Naka-ku Nagoya-shi
2-minute walk from 「Hisaya-Ohdori」 Station Subway Sakura-dori Line, Meijo Line

LEGAL CONSULTATION for International Residents

nilo NAGOYA INTERNATIONAL
LAW OFFICE
名古屋国際法律事務所

Legal consultation by experienced attorneys. We assist with a variety of cases, including immigration matters, divorce, traffic accidents, labor relations, and criminal defense. All nationalities are welcome. We provide consultation in Japanese or English.

- Reservation: TEL (052)433-4100
- 9:15-18:00 (Monday - Friday)
- Japanese or English (日本語・英語)
- Consultation Fee: ¥11,000/1hour
相談料: 1時間 11,000円 (税込み)

Masanori TANABE (Attorney at law in Japan & New York)
代表弁護士 田邊正紀 (日本・ニューヨーク州)
Access Marunouchi Bldg. 4F, 2-6-21 Marunouchi, Naka-ku, Nagoya,
Aichi 460-0002 JAPAN



<https://nagoya-intlaw.com/en>

Looking for
a job in Nagoya?

register now/



Guidable Jobs.
is perfect for you.



- ☑ Interview support
- ☑ Various job offers
- ☑ Fast & reliable
- ☑ Easy to understand

03-3348-3348

Get help via the LINE app!

Become a friend
of NIC on **LINE**,
and consult us via
voice call. You
can also get living
information sent to you.
Become a friend of NIC at:
<https://lin.ee/6OyRJgl>



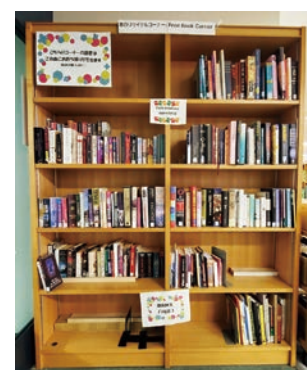
NIC Library News NICライブラリーニュース

Used Book Corner

A selection of books either formerly held in the Library collection or donated by Library users are currently on display in the Library. Library users are welcome to browse and choose a number of books to take home.

When taking books from the Used Book Corner, a cash donation is appreciated. Donations will go to the National Federation of UNESCO Associations in Japan for the promotion of literacy education in developing countries, and also contribute towards the purchase of new books for the Library.

When: Until Sun. 27 Feb.



Assistance with finding resources is available at the counter at the Library entrance. Please feel free to ask staff if there is something you're looking for. The NIC Library is located on the third floor of the Nagoya International Center Building, across the corridor from the NIC Information Counter.

NIC Library hours: 9:00 - 19:00 Tuesday to Sunday
Website: <https://www.nic-nagoya.or.jp/en/library/>