

日本語

English

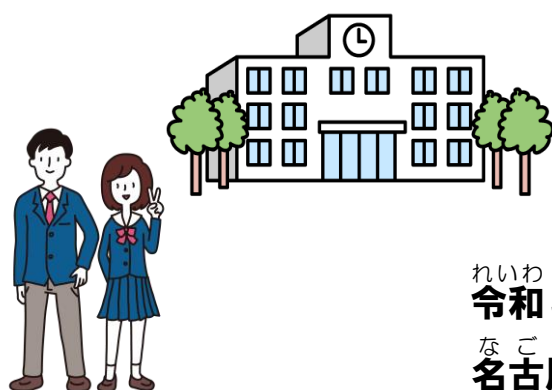
がいこくじん こ ほごしゃ しんろ
外国人の子どもと保護者のための進路ガイダンス 2021

School Guidance Seminar

for Children and Parents of Foreign Nationals

資料 / Reference

*Contents valid at time of publication (July 2021)



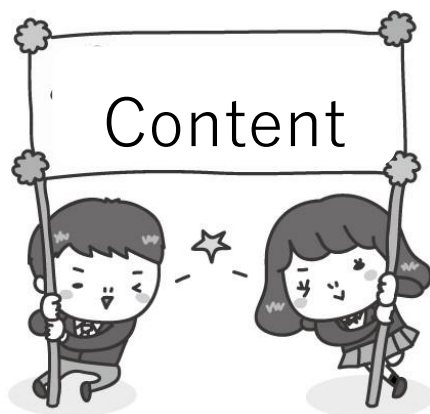
れいわ ねん がつ にち にち
令和3年7月25日 (日) 13:00~16:30
なごやこくさい べつとう
名古屋国際センター 別棟ホール

Sunday, July 25, 2021 13:00~16:30

Nagoya International Center Annex Hall

- しゅさい こうえきざいだんほうじん なごやこくさい
主催: 公益財団法人名古屋国際センター
Hosted by: Nagoya International Center
- きょうさい なごやしきょういくいいんかい
共催: 名古屋市教育委員会
Co-hosted by: Nagoya Board of Education
- こうえん あいちけんきょういくいいんかい
後援: 愛知県教育委員会
Supported by: Aichi Board of Education





Career path after junior high school graduation and Preparation for high school ---- 1~6

School Information

Nagoya City Chuo High School Part-time course (Evening) -----7

Nagoya City Kogyo (Industrial) High School Part-Time course (Evening) -----8

Aichi Prefectural Nakagawa Shogyo (Commercial) High School -----9

Educational Corporation Dempa Gakuen Nagoya Kogakuin Senmon-gakkou
 (Upper secondary course) -----10

Specialized Training School CLARK High School Nagoya School -----11

Sharing Personal experiences -----12

Information

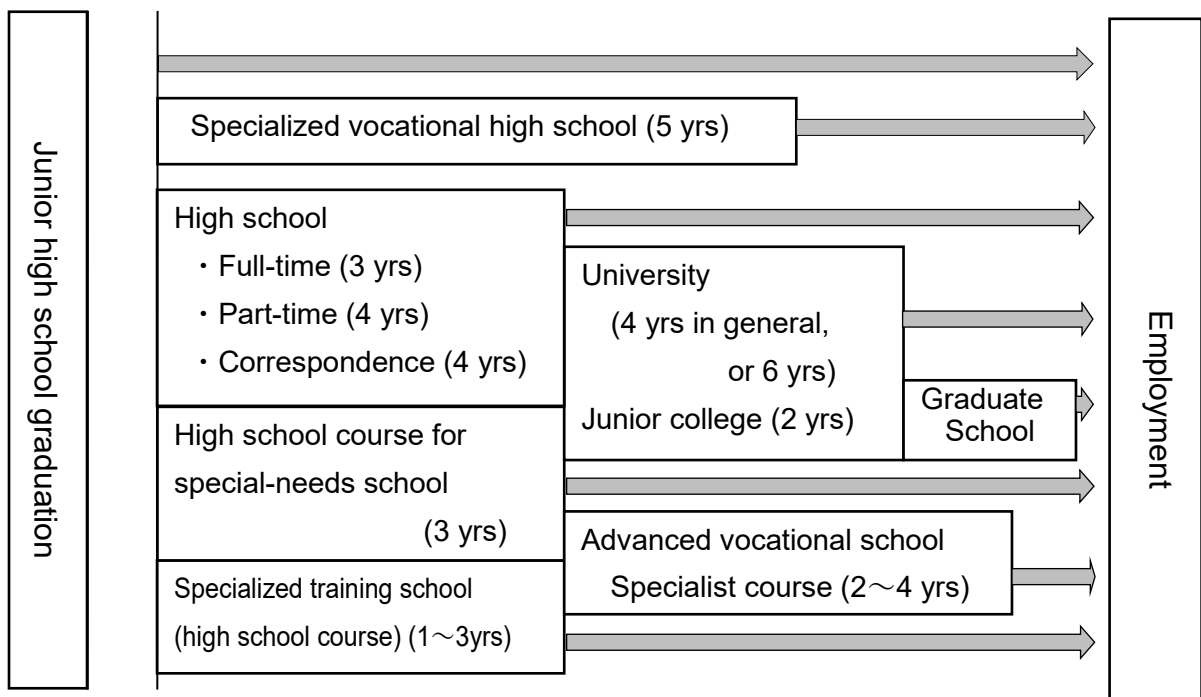
Supplementary information----- 13~17

Aid system to reduce burden of (full-time) private high school and entrance fee ----- 18

Career Path after Junior High School Graduation and Preparation for High School

Nagoya Board of Education

1. Main career path after graduation from Junior high school



- Students have to take examinations of academic ability to go on to higher level of school and to be employed after graduating from junior high school in most cases.
- Students are not allowed to skip a grade or go up to a higher level of school during compulsory education (elementary and junior high school). Generally, it is the same for high school and university, etc. with some exceptions.

2. Career Guidance in Junior High School

(1) **SHINRO SETSUMEIKAI Career path session**

This session is directed towards students in Grade 3 and their guardians with the purpose of explaining a students' career path (to enter employment or going up to higher level of school) after graduating from junior high schools. This session provides not only general information regarding career paths, but also particular information such as the schedule of career path related activities and trends regarding graduates career options.

(2) **KOJIN KONDANKAI Student-Guardian-Teacher Meeting**

This is a meeting for the student, the parent/guardian, and the teacher to discuss about a student's future course after graduation. It is a good opportunity to discuss specific courses according to each students' desire.

(3) **Career path information via Shinro Dayori, brochures, etc.**

Information on finding employment or entering higher education is made available through Career Path Letter (*shinro dayori*), brochures, etc. Please be sure to observe the deadlines for each application document such as experience-learning, consultation sessions, and other documents required for job application and school entrance application.

3. High School

Entering higher education

After completing junior high school, there are a variety of higher education options such as going to specialized vocational high schools, high schools (full-time, part-time or correspondence course), special technical schools, special-needs schools and others.

(1) **National, Public & Private high schools in Aichi prefecture**

1. **National High Schools:**

2 affiliated high schools, 1 specialized vocational high school

2. **Public High Schools:**

Approx. 165 schools. In addition to the general education curriculum, there are comprehensive courses, courses specialized in industry, commerce, agriculture, home economics, fishery, welfare etc. Within Nagoya City, there are Aichi Prefectural high schools and Nagoya City municipal high schools.

3. **Private High Schools:**

Approx. 55 schools. Each has its own distinctive characteristics, for example a number of schools provide continuous education from junior high up to university level, some schools offer their own independent curriculum, and so on.

(2) **Courses**

1. **Full-time courses:**

Daily class schedule is almost the same as the one at junior high schools. The length of study is 3 years.

2. **Part-time courses:**

Two schedules are available: evening schedules and daytime schedules. The number of class hours per day is 4 hours on average and the length of study is 4 years on average.

3. **Correspondence course:**

The course includes home study, report submission and attending certain classes. Generally, the length of study is 4 years.

(3) Entrance Examinations (Test)

Examination system differs depending on schools and courses, etc.

Some schools offer special entrance systems for foreign students. (The following are public schools that carry out special selections that can be taken from the Owari district.)

[Examination for returnees]

- Nagoya City Meito High School, International English course
- Aichi Prefectural Chigusa High School, International Studies course
- Aichi Prefectural Nakamura High School, General course
- Aichi Prefectural Kariyakita High School, International Studies course

[Examination for foreign students and war-displaced Japanese descendents returning from China]

- Aichi Prefectural Nagoya Minami High School, General course
- Aichi Prefectural Komaki High School, General course
- Aichi Prefectural Higashiura High School, General course
- Aichi Prefectural Nakagawa Shogyo High School, Commercial course
- Aichi Prefectural Toyota Koka High School, Industrial course
- Aichi Prefectural Toyokawa Koka High School, Industrial course
- Aichi Prefectural Iwakura Sogo High School, Integrated course
- Aichi Prefectural Chiryu High School, Integrated course
- Aichi Prefectural Toyohashi Nishi High School, Integrated course

① Public high schools with full-time courses

- 1) Selection by recommendation: Interview, (with a special examination) * Required to take academic achievement test (5 subjects: Japanese, Social Science, Math, Science, English) as well.
- 2) General selection: Academic achievement test (5 subjects: Japanese, Social Science, Math, Science, English) and an interview (with a special test)
- 3) Special selection:
 - Entrance selection of returnee student 【Selection of returnee student】
Academic achievement test (for subjects covered, see page 13) and an interview
* Successful applicants are selected based on the results of academic achievement tests of 3 subjects (Japanese, Math, English) and an interview.
 - Examination for foreign students and war-displaced Japanese descendents returning from China 【Selection of foreign students, etc.】
Academic achievement tests (5 subjects: Japanese, Math, English) and an individual interview
* Academic achievement tests (Comprehensive examinations of basic questions in Japanese, Math, English are held on the day of an interview. Kana alongside Kanji or Chinese characters are provided on the exam.)
* Successful applicants are selected based on the results of academic achievement tests and an individual interview.

② Public high schools with part-time courses

Basic academic achievement test (3 subjects: Japanese, Math and English)

Essays and interviews (basic academic achievement tests)

③ Private high schools with full-time courses

*Recommendation examination: an interview, basic academic examinations, etc.

*General entrance examination: academic achievement examinations (either three or all five of the following subjects: Japanese, Social Science, Math, Science & English) and an interview, etc.

(4) Schedule of Upcoming Entrance Examinations (Partial)

Jan. 26 th (Wed.)	Private high school	Recommendation entrance examination
Feb. 1 st (Tue.) to 3 rd (Thu.)	Private high school	General entrance examination
Jan. 30 th (Sun.)	Public high school	Correspondence course (the first selection)
Feb 2 nd (Wed.)	Public high school	Correspondence course (the first selection) - Result announcement
March 4 th (Fri.)	Public high school	Part-time course - the first entrance examination
March 7 th (Mon.) & 8 th (Tue.)	Public high school	Full-time course (A group)
March 9 th (Wed.)	Public high school	Part-time course (The first examination) - Result announcement
March 10 th (Thu.) & 11 th (Fri.)	Public high school	Full-time course (B group)
March 18 th (Fri.)	Public high school	Full-time course - Result announcement
March 25 th (Fri.)	Public high school	Part-time course (The second examination)
March 28 th (Mon.)	Public high school	Part-time course (the second examination) - Result announcement
March 30 th (Wed.)	Public high school	Correspondence course - The second selection
March 31 st (Thu.)	Public high school	Correspondence course (the second selection) - Result announcement

(5) School Fees

Public high school tuition fee is approximately 120,000yen per year. The tuition fee for private high schools is approximately 500,000yen per year, but the amount varies depending on each school.

※National subsidies for tuition fees are available depending on the income of parents / guardians. However, the difference between tuition fees and subsidies will be incurred.

Expenses other than tuition (entrance fee, uniforms, textbooks, reserve funds for school trips, student membership fee and school lunch, etc.) are needed for both public, national and private high schools.

(6) Scholarship System

For students with financial difficulties, a variety types of assistance are available such as reduction (exemption of entrance fees), subsidies (subsidies for tuition fees. No repayment required) and loans (temporary loans for tuition fees repayment required at a later date).

1. Entrance examination methods and details

◇ Students who wish to go to high school (full-time course) after graduating from junior high school, needed to follow the entrance examination schedules as follows.

Private high school Admission on recommendation
January 26

This is one of the options for students who wish to go to private high school.

Private high school General Entrance Examination
February 1 to 3

Students may take the entrance examinations for up to three preferred private high schools. After passing the examination, he/she can still take the public high school examinations a while suspending entrance application procedures for private high school.

Public high school entrance examination
Public high school entrance examination (Admission on recommendation)
Schedule A: March 7 and 8
Schedule B: March 10 and 11

This examination is for students who wish to go to a public high school. Student may take examinations for up to two schools on both schedule A and B.

※ Please refer to “2. Public high school examination”

2. Public high school examination

Public high school entrance examination is called “Multiple examination system”. Student may select and take examinations up to two schools based on his/her preference (first preference · Second preference)

* Student may take only one examination of his/her choice as well.

	Owari district		Mikawa district (general course)	Specialized course
	Group 1	Group 2		
Group A	☆	△	○	□
Group B	★	▲	●	■

If taking the examination for the general course, only schools in the district one resides may be selected.

<Combinations able to take two examinations>

Owari district : ☆-★、☆-■、★-□、△-▲、△-■、▲-□、□-■

Mikawa district : ○-●、○-■、●-□、□-■

<Combinations unable to take two examinations>

Owari district : ☆-△、☆-▲、☆-□、▲-■

Mikawa district : ○-○、●-●、○-□、●-■

※ Combining general course schools from different district such as ☆-● is not allowed.

※ Specialized course is not effected by school district. Student may take examination as per his/her preference.

※ Admission is possible to one school only, even if the student takes examinations for two schools. Student may not choose the school after obtaining the admission.

3. Pathway guidance yearly schedule

In determining your future educational progress, it is important to talk to your parents and teachers about your preferences and thoughts during educational consultations, individual consultations, etc., and understand exactly what you must do to work towards your goal. You will also need to see for yourself what conditions are like at each of your preferred schools. To help you with your decision-making, the general schedule on further education and career guidance is as follows:

(Example)

Month	Junior High School	High School and other schools
April	Career guidance Career preference survey	
May	Home visit Mid-term examination	
June	Education consultation · Term-end examination	
July	Parent-teacher's meeting (Individual meeting)	Trial enrollment · School orientation
August		
September	Career preference survey	
October	Mid-term examination	
November	Education consultation · Term-end examination	↓
December	Parent-teacher's meeting (Parent- teacher-student meeting) *Consultation on private high school examination	
January	Parent-teacher's meeting (Parent-teacher-student meeting) *Consultation on public high school examination	
February		Entrance examination by commendation on private high school and vocational school Private high school and vocational school entrance examination
March		Public high school academic achievement test / interview (with a special examination) Public high school interview (by recommendation) Public high school (Part-time) entrance achievement test

※The schedule and process vary depending on schools.

School Name	Nagoya City Chuo High School Part-time course (Evening) (<i>Nagoya Shiritsu Chuo Kotogakko Yakan Teiji-sei</i>)
Address	〒460-0007 Nagoya-shi, Naka-ku, Shinsakae 3-15-45 Tel: 052-241-6538
Access from Closest Station	8-minute walk from Chikusa Subway Sta., exit 5; 8-minute walk from JR Chikusa Sta. or 3-minute walk from Shinsakae Sanchome city bus stop.
Features of the school (time schedule, subjects, school events & career path after graduation)	<p>Feature of the school: Students are allowed to work part-time during daytime and attend school in the evening. Students may study at their own pace taking for up to 4 years to complete the course. It is also possible to complete within 3 years by additionally attending daytime courses, taking the High School Level Qualification Test or taking a correspondence course.</p> <p>Schedule: School food service 17:10 - 17:35. 1st period 17:40 - 18:25. 2nd period 18:25 - 19:10. Break 19:10 - 19:15. 3rd period 19:15 - 20:00. 4th period 20:00 - 20:45</p> <p>Subjects: Students take general curriculum courses and commercial courses in their first year; they study together in five homeroom classes. Classes are divided into comprehensive course and commercial courses starting from the second year. General curriculum course students take general subjects and commercial course students take specialized subjects such as bookkeeping, accounting, information processing and researching in addition to general subjects. In the 4th year, business information course students also have a choice of taking basic commercial course subjects such as various commercial-related certification tests including the <i>shogyo kentei</i> and the information processing test (<i>johoshori kentei</i>).</p> <p>School Events: Welcome party for new students, ball tournaments, sports festivals, culture concerts and exhibitions, culture festival, film festival, school trip (4th year), farewell party for graduates, lecture, and joint appreciation events.</p> <p>Club Activities: regular practice time (20:45 - 21:30) Sports → baseball, badminton, basketball, volleyball, tennis, football, table tennis, and track and field Culture → theater, tea ceremony, calligraphy, photography, music, commerce, manga cultural studies ※Participation in National tournaments (in recent years) → Men's and Women's basketball, football, track and field, Men's badminton etc.</p> <p>Career path: 3 students entered 4-year university, 2 students entered 2-year college, 9 students entered vocational school and 18 students commenced employment.</p>
Annual tuition (Approx.)	32,400 yen (depending on the amount of income of each family, the payment may be exempted.)
Annual expenses	83,000 Yen each year (evening meal, reserve fund for school trip, student council fees) + 6,650 Yen (athletic uniform and footwear). An additional 28,500 Yen is required to be paid in April (applied to this year, next year's amount has not yet been decided).
Number of foreign students	About 47 students
Main Nationalities	China, Philippines, Brazil, Nepal
Remarks	After admission, first year students are given basic academic training in the 3 core subjects (Japanese, Mathematics and English). The training is offered after school 45 times each year and taught by all teaching staff. Commercial practical trainings for the commercial course are also taught by several teachers. Students learning at the comprehensive course are also taught in small groups. For foreign students who has difficulties with Japanese language, individual tutoring classes are available on subjects of Japanese and Geography for 1st graders, Japanese and Social science for 2nd graders. However, it would be difficult to follow classes if student do not understand Japanese daily conversation and hiragana. Please learn Japanese language well before taking our entrance exam.

School Name	Nagoya City Kogyo (Industrial) High School Part-time course (Evening) (Nagoya Shiritsu Kogyo Kotogakko Yakan Teiji-sei)
Address	〒454-0815 Nagoya-shi, Nakagawa-ku, Kitae-cho 3-13 Tel: 052-361-3116
Access from Closest Station	5-minute walk from Shiritsu Kogyo koko city bus stop 5-minute walk from Nakajima Sta. , Aonami Line
Features of the school (time schedule, subjects, school events & career path after graduation)	<p>Feature of the school: Students are allowed to work part-time during the day and attend school in the evening. Students may study at their own pace taking for up to 3 years to complete courses. It is also possible to complete school in 3 years by attending day time courses by taking the High School Level Qualification Test, or by taking a distant learning course. It all depends on one's desire.</p> <p>Schedule: School food service 17:10 - 17:35. 1st period 17:40 - 18:25. 2nd period 18:25 - 19:10. Break 19:10 - 19:15. 3rd period 19:15 - 20:00. 4th period 20:00 - 20:45</p> <p>Subjects: In addition to general curriculum course subjects, students study basic industrial subjects (basic industrial technology, basic information technology, basic electrical) in their 1st and 2nd years. In Year 3, the modules are mechanical course, electrical course and computer course. In the following two years students learn specialized knowledge and skills on machinery, electronics, computers and automobiles. Multiple teachers give specialized lessons on practical training in industrial-related subjects. Students have opportunities to take certification for gas welding technicians, dangerous object handlers, computational technicians, information technician, etc.</p> <p>School events: Sports festivals, cultural festivals, school trip (4th year), joint appreciation events, farewell party for graduates, etc.</p> <p>Club activities: 20:45 - 22:30 Club activities include rubber baseball, table tennis, basketball, badminton and robot clubs. In recent years the badminton club has participated in national competitions, rubber baseball team won the prefectural championship and robot club won the special recognition award at the industrial high school robot competition.</p> <p>Career path: 4 students entered vocational schools; 2 entered polytech centers; 2 entered the self-defense forces; 19 commenced regular employment (2020 school year graduates).</p>
Annual tuition (Approx.)	32,400 yen (depending on the amount of annual income of each family, the payment may be exempted.)
Annual expenses excluding tuition fees	Approximately 80,000 Yen each year (evening meal, reserve funds for school trips, and student council fees). Additionally, around 50,000 Yen is required to be paid in April (this includes fee for athletic clothes, gym shoes, work clothing, textbooks and a calculator). Meals and financial support for textbooks are available for those who are eligible.
Number of foreign students	6 students
Main Nationalities	Philippines, Vietnam, Brazil, Nepal, China
Remarks	Students for the "Life and literacy" course (subjects set by school) are taught in a small group learn basic academic skills, Japanese, math and English. (40 students are divided into three groups) For Japanese, math and English, supplemental studies are offered to less confident students at the beginning of the school year, which are taught by all the teachers.

School Name	Aichi Prefectural Nakagawa Shogyo (Commercial) High School (Aichi Kenritsu Nakagawa Shogyo Kotogakko)
Address	〒454-0912 Nagoya-shi, Nakagawa-ku, Noda 3-280 Tel: 052-361-7457
Access from Closest Station	18-minute walk from Hatta Sta. (JR, Kintetsu and Higashiyama Subway Line)
Features of the school (time schedule, subjects, school events & career path after graduation)	<p>Schedule and Subjects: Two-thirds of the classes are for learning general subjects and one-third are for commercial-related specialized subjects. Commercial subjects such as book keeping and information processing are to be studied in the first year. Starting in the 2nd year, students are divided into three courses in accordance with the student's interests: an integrated business course, an information processing course, or an international business course.</p> <p>School Events: In the 2nd year, students go on a study tour to Hiroshima, Kobe.</p> <p>Club Activities: Athletic clubs and unique cultural clubs taking advantage of commercial high school are offered. Volleyball club successfully reached high rank in the prefectural tournament.</p> <p>Career path: 54 percent of students have commenced employment and 46 percent of students have gone on to university, junior college or vocational school.</p>
Annual tuition (Approx.)	Annual fees: 118,800 yen (monthly cost of 9,900 yen) Please note: Households who receive school subsidies do not need to pay this tuition. (for households whose total amount of "Municipal resident tax base x 6%—adjusted deduction" is no more than 30,4200 yen . *In ordinance-designated cities (e.g. Nagoya City), adjusted deduction x 3/4)
Annual expenses excluding tuition fees	235,050 yen (for the first year) [this includes a uniform, school supplies, teaching aid materials and a reserve fund for the school trip.] The 2 nd year costs are estimated to be 462,00 yen and that of the 3 rd year is 33,200 yen (to be confirmed).
Number of foreign students	24 (1 st year: 11 students, 2 nd year: 7 students, 3 rd year: 6 students)
Main Nationalities	Philippines, Brazil, China, Peru, Pakistan, Colombia, Iran
Remarks	

School Name	Incorporated educational institution Dempa-gakuen Nagoya Kogakuin Senmon-gakko (Upper secondary course)
Address	〒456-0034 Nagoya-shi, Atsuta-ku, Temma 2- 24-14 Tel : 052-682-7871
Access from Closest Station	◇5-minute walk southeastward from Subway Meijo Line Temma-cho Sta. Exit 3 ◇15-minute walk southward from Meitetsu Nagoya Line Jingū-mae Sta. ◇5-minute walk northward from Meitetsu Tokoname Line Toyodahommachi Sta. ◇20-minute walk southward from JR Tokaido Line Atsuta Sta. (School bus available in the morning and after school)
Features of the school (time schedule, subjects, school events & career path after graduation)	<p>Features of the school</p> <ul style="list-style-type: none"> • Our priority is understanding the basics, to help students who are anxious about learning. Our school motto: “I can understand it”, “I can do it”, and “I am confident” • “Comprehensive course” and “Electrical course” each have two courses • Students have opportunities to obtain various kinds of qualifications and certifications. • Students obtain a high school diploma (Aichi Sangyo-daigaku Kogyo Koko) when graduating from our school. <p>Schedule:</p> <ul style="list-style-type: none"> • 6 classes on weekdays (50 minutes per class, 9:00 to 15:35) 5 school days per week <p>Subjects:</p> <ul style="list-style-type: none"> • General curriculum course: Students study mostly general subjects (Japanese, Mathematics, English etc.). General information courses offer a large amount of classes for computer skills. • Electrical course: Half of the subjects are general subjects and the other half are specialized subjects for mechanical and electrical learnings. <p>Club activities: • Sports: 11 clubs • Cultural: 6 clubs</p> <ul style="list-style-type: none"> * Boxing club participates in national competitions every year. *Mechatronics club has participated in various robot competitions and has achieved good results. *Computer create club participated in the e-sports high school competition. <p>Career path:</p> <ul style="list-style-type: none"> • Education continuance rate approximately 70% (University, vocational school, etc.) • Employment rate is approximately 30% (All students wishing to enter employment received job offers)
Annual tuition (Approx.)	372,000 yen [93,000 yen x 4 months (to be paid in April, July, October & January)] ※National subsidy system for tuition fees and Aichi prefectural system for reduction of tuition fees is available. The amount paid maybe refunded depending on the income level of the guardians.
Annual expenses excluding tuition fees	○Fees to be paid at the time of entrance: General courses: 363,350 yen ; Electrical courses: 367,150 yen (Entrance fees, educational fees, correspondence course entrance fees, physical education supply expenses, uniforms, textbooks and materials) *Aichi prefecture will return part of enrollment fee and correspondence course as subsidy in accordance with amount of your income. ○Other tuition fees: 129,000 yen (Fees for school trips, student council, events, and correspondence course – prefectural reduction system available)
Number of foreign students	55 (1 st year: 21 students, 2 nd year: 24 students, 3 rd year: 10 students)
Main Nationalities	China, Korea, Philippines, Brazil, Peru, Nepal, Bolivia, Vietnam, Pakistan, Netherlands, Turkey, Myanmar
Remarks	Open campus (Aug. 22) Campus tour (1 st tour is held on Oct. 24. Five more tours are scheduled)

School Name	Specialized Training School CLARK High School Nagoya School
Address	〒450-0002 Nagoya-shi, Nakamura-ku, Meieki 3-11-20 Tel : 052-589-3731
Access from Closest Station	5 minute walk from JR Nagoya Sta.
Features of the school (time schedule, subjects, school events & career path after graduation)	<p>Feature of the school: Two courses are available on Nagoya campus; International course and comprehensive education preparatory course. Returnee students and students with multiple nationalities are enrolled. Main career path after graduation is going to university. Upon graduation, students also attain the graduation qualification from Clark Memorial International High School.</p> <p>Schedule: 6 classes/day. In the International Course, about half of the classes per week (15 classes / week) are held entirely in English.</p> <p>Subjects: In order to obtain graduation qualifications for the general high school course, classes are provided of general subjects such as Japanese, mathematics, English, sociology and science as well as specialized subjects (commerce-oriented, English-oriented).</p> <p>School Events: Cultural festival, sports festival, experience learning trip to Hokkaido, school trip, sports tournaments, choir competition, etc.</p> <p>Club activities: Soccer, basketball, light music, dance, art, rubber baseball, etc.</p> <p>Career path of 2019 school year graduates: University 52 students, two-year college 1 student, vocational school 23 students (Education continuance rate 77%). Employment 6 students. 3 students failed entrance examination and are currently preparing for next year.</p>
Annual tuition (Approx.)	297,700~841,800 yen (Maximum of 447,600yen is exempted depending on the amount of household income)
Annual expenses excluding tuition fees	Approximately 150,000 yen (Experience learning trip to Hokkaido / school trip, mock examination & qualification examination fees, etc.) *Additionally, approximately 100,000 yen required for uniform expenses.
Number of foreign students	Approximately 15 students
Main Nationalities	China, South Korea, America, Philippines, Brazil, Nepal, etc.
Remarks	Course in which student may choose how often to attend school also available

★1 Examination specifically for foreign students

◎Implementation schools (General courses : 5 schools)

Owari District (3 schools)	Mikawa District (2 schools)
Nagoya Minami High School (Nagoya City)	Koromodai High School (Toyota City)
Komaki High School (Komaki City)	Anjo Minami High School (Anjo City)
Higashiura High School (Chita-gun Higashiura Town)	

(Vocational courses : 3 schools)

Whole prefecture (3 institutions)	
Nakagawa Commercial High School Commercial Course (Nagoya City)	Toyota Industrial High School Industrial Course (Toyota City)
Toyokawa Industrial High School Industrial Course (Toyokawa City)	

(Comprehensive Course : 3 schools)

Whole prefecture (3 institutions)	
Iwakura Sogo High School (Iwakura City)	Chiryu High School (Chiryu City)
Toyohashi Nishi High School (Toyohashi City)	

* Students can study by selecting from a diverse range of subjects based on their interests, beyond the boundaries of conventional general and specialized courses. This course allows students to learn while deepening their self-awareness of their aptitude and future pathways.

◎Examinable Subjects :

Tests of three subjects (Japanese, Mathematics, English) and interviews

※Apart from selective academic examinations for foreign students, we will also conduct general scholastic ability tests (five subjects including Japanese, Mathematics, Social Studies, Science and English). This is because the candidate will be subjected to general selection when he or she fails to pass the examination for foreign students.

◎ Those who can take this examination (Must meet all following)

- Foreign nationals currently residing (or planning to reside) in Aichi Prefecture with a parent / guardian
- People who have completed (or are planning to complete) 9 years of school education (i.e. elementary school and junior high school or equivalent) either within or outside Japan

*Other conditions apply; please be sure to check with your teacher.

☆For detailed information : Aichi Prefectural Board of Education

High School Education Division ☎ (052) 954-6786

★2 Scholastic ability test subjects for general entrance examinations

		Scholastic Ability Tests					Others		Remarks
		Japanese	Math	Social Studies	Science	English	Essay	Interview	
Public	Full-time system	◎	◎	◎	◎	◎		◎	
	Selection of foreign students	◎	◎	◎	◎	◎		◎	*2
		★ *1	★ *1			★ *1			
Part-time system	○	○			○	◎	◎	*3 *There are schools that do not conduct scholastic ability tests.	
Private		◎	◎	△	△	◎		◎	*This varies among schools.

- *1 : Comprehensive examination combined of three subjects with phonetic (*kana*) provided
- *2 : If you do not pass the examination specifically for foreign students, you will be subjected to the general selection, you must also take the general scholastic ability examination separately from the examination specifically for foreign students.
- *3 : The scholastic ability test for Japanese, Mathematics, and English, which is held on a part-time basis, is basic.

★3 Exam papers from the past 5 years are available through.

* Aichi-ken Kenmin Sodan - Joho Center Information Corner

Address : Nagoya-shi Naka-ku Sannomaru,2-3-2, Aichi-ken Jichi Center 2nd floor
3 minutes' walk from Exit No. 5 Shiyakusho Station, Subway Meijo Line.

Phone : 052-954-6164 / Hours : 9:00am-5:15pm
Closed Saturdays, Sundays and public holidays

★4 To find out more about schools

(1) High School Immersion Program

- This is conducted from summer to autumn every year.
- Please consult your junior high school teachers regarding the schedule of each school.

(2) Aichi Private School Exhibition

- Dates: October 23 (Saturday) and 24 (Sunday) 2021
- Venue: Aichi Prefectural Gymnasium (1-1 Ninomaru, Naka-ku, Nagoya City)

(3) Aichi Specialized School Exhibition

- Date: October 9 (Saturday) and 24 (Sunday) 2021
- Venue: Nadya Park (3-18-1 Sakae, Naka-ku, Nagoya City)

★5 Information for those who have not graduated from junior high school

(1) Junior high school night class (1 school within Aichi Prefecture • Naka-ku, Nagoya)

- Target group : Those who are 15 years old or older living in Aichi prefecture and who have not graduated from junior high school
- Examination : Interview and simple scholastic ability assessment (Japanese and Mathematics)
- Period : 2 years • Fee : Free tuition fee and textbooks
- Application to be submitted between January and February every year.
 - ☆ Contact : Aichi Prefecture Education and Sports Promotion Foundation Educational Division
 - ☎ (052) 242-1588

(2) Examination of junior high school graduation equivalency certification

This is a national examination that recognizes the standard of scholastic ability equivalent of junior high school graduation. Passes in all five academic subjects (Japanese, Social studies, Mathematics, Science and English) will earn a candidate the eligibility to enter a high school.

- Target group: Those who are 15 years old or older and who do not graduate from junior high school
- Examination fee : Free of charge
- Examination : Once every year (in October)
- ※ Application to be submitted between July and the beginning of September.
 - ※You can take the exam with phonetic (*kana*) provided.

☆Contact us : MEXT Ministry Lifelong Learning Promotion Division ☎ (03) 5253-4111

Aichi Prefectural Board of Education Compulsory Education Section ☎ (052) 954-6790

★6 Example of Financial Aid Available

School	Content	Inquiries
Municipal High Schools <i>Nagoya Shi-ritsu-koko</i>	You can be exempted from the entrance fee (fee will become free-of-charge) After being accepted to high school you may apply through the school.	Nagoya City Education Committee Board of School Affairs Tel: 052-972-3385
Prefectural High Schools <i>Ken-ritsu-koko</i>	You can be exempted from the entrance fee (fee will become free-of-charge) and receive a waiver or reduction of lesson fees (only the tuition fees for advanced courses). After being accepted to high school you may apply through the school.	Aichi Prefecture Education Committee Finance Department Tel: 052-954-6763
National, Public and Private High Schools	Scholarships are available for residents of Nagoya City. After being accepted to high school you may apply through the school. Students planning to enter high school the following year can receive a loan (temporary; must be repaid) for necessary school expenses* (entrance preparation). Applications by reservation can be made in September of 3 rd year at respective junior high schools.	Nagoya City Education Committee Board of School Affairs Tel: 052-972-3385
National & Public High Schools Private High schools	Students can receive a loan for scholarships* (temporary; must be repaid). No interest. After being accepted to high school you may apply through the school. (During May and June) Applications by reservation can also be made through respective junior high schools (in July).	Aichi Prefecture Board of Education Senior High School Education, Scholarship Section Division Tel: 052-954-6785
Specialized Vocational High Schools	Students can receive a loan for scholarships* (temporary; must be repaid). After being accepted to high school you may apply through the school. Applications by reservation can also be made through respective junior high schools.	Japan Student Services *Individual inquiries not accepted. Please inquire your current school for details.

(References: Nagoya City and Aichi Prefecture Website)

Website page: <http://www.city.nagoya.jp/kyoiku/page/0000051028.html>

<http://www.pref.aichi.jp/0000006059.html>

[Other Available Financial Aid Available]

Loans are also available before admission from the central government to pay for admission and lesson fees. The loan has to be repaid within 15 years. Conditions apply; please check in advance.

☆Inquiries: **Japan Finance Corporation Kyoiku Loan Call Center - Tel: 0570-008656**

★7 Necessary Expenses

* Amounts and methods of payment vary between schools.

Amounts provided below may be subject to change.

Please see the materials provided by schools when your examination or admission is confirmed.

Period when payment due	Private schools / Specialized training schools		Public schools Admission on recommendation / general examination
	Admission on recommendation	Admission by general examination	
Early January	Examination fee per school Around 13,000 yen		
Mid-January		Examination fee per school Around 13,000 yen (Up to 3 schools)	
Early February	Admission fee Around 200,000 yen	Advance payment Around 20,000 yen	
Mid-February			Examination fee Full-time course 2,200 yen per school (Up to 2 schools) Part-time course 950 yen *No fee for correspondence courses
Mid- to late-March		Payable upon admission Around 180,000 yen	Admission fee Full-time 5,650 yen Part-time 2,100 yen
	Uniform, textbooks, facilities maintenance, PTA fees, etc. Around 300,000 yen		Uniform, textbooks, facilities maintenance, PTA fees, etc. Around 160,000 yen
After admission, before summer vacation	Half of annual tuition fees, etc., payments toward school trip, etc. Around 150,000 yen		Half of annual tuition fees, etc., payments toward school trip, etc. Around 100,000 yen
Rough total to be paid by September	Around 600,000 to 700,000 yen		Around 250,000 to 300,000 yen

* In the case of specialized training schools, additional fees may be required for the acquisition of specialized skills. Tuition may be more expensive for specialized training schools where, upon graduation, students also attain a high school graduation qualification.

You can get an estimate of the amount of the private school subsidy you may be eligible for at this URL.

<http://www.aichi-shigaku.gr.jp/contents/hojokin.htm>

愛知県私学協会 Aichi Shigaku 愛知県の私立高等学校の情報

トップページ 愛知県私学協会の概要 私立高等学校のページ 資料・行事のページ 授業料軽減・奨学金等 関連リンク

■□■ 授業料(学納金)軽減・奨学金等 ■□■

▼授業料軽減補助制度の案内パンフレット NowClick!

▼軽減補助・奨学給付金の資料 -愛知県- NowClick

私立高校の学納金と奨学制度について
～助成金を活用すれば学費の負担を軽減できます～

私立高校へ入学したいけど、お母様が心配!と思われる方も少なくないでしょう。お父様では、お母様の心配を軽減するために、その入り口の幅が広がるように、令和2年度より私立高校の授業料軽減補助制度が拡充され、入学金と授業料の両方支援が実現しました。これらの制度を活用すると、必ずしも「私立は高い」とは言えなくなってきたのが現状です。

全日制課程

入学金の軽減補助制度

入学金は学校へ納付する費用に入学金といいますが、私立高校は私立高校の入学料(入学料)と入学金の半額に減額20%、60日以内での入学金が、県の入学金補助金もあわせて、半額に減額されます。

私立高校の入学料(入学金)	入学金(県)	入学金(県)	入学金(県)	入学金(県)
0円～212,500円	720円(県)	201,584円	210,000円	1,584円
212,700円～270,250円	840円(県)	138,475円 57円 5,297円 合計 213,549円	150,000円	101,584円
270,300円～	840円(県)	0円	0円	201,584円

※1 県立高等学校に入学した生徒が、入学料(入学金)を100%免除する。私立高等学校の入学料(入学金)を半額に減額する。

※2 入学金(県)は、私立高等学校の入学料(入学金)の半額に減額する。

※3 入学金(県)は、私立高等学校の入学料(入学金)の半額に減額する。

※4 入学金(県)は、私立高等学校の入学料(入学金)の半額に減額する。

※5 入学金(県)は、私立高等学校の入学料(入学金)の半額に減額する。

※6 入学金(県)は、私立高等学校の入学料(入学金)の半額に減額する。

※7 入学金(県)は、私立高等学校の入学料(入学金)の半額に減額する。

※8 入学金(県)は、私立高等学校の入学料(入学金)の半額に減額する。

※9 入学金(県)は、私立高等学校の入学料(入学金)の半額に減額する。

※10 入学金(県)は、私立高等学校の入学料(入学金)の半額に減額する。

TEL:052-954-6187

私立高校授業料実質無償化

高等学校等就学支援金(国庫補助金等交付法)の制度改正で、私立高校等に学ぶ生徒への支援が厚くなります!

授業料(約10万円)実質無償化(1)授業料の上乗せがなくなります!

授業料(約10万円)実質無償化(2)授業料の上乗せがなくなります!

授業料(約10万円)実質無償化(3)授業料の上乗せがなくなります!

授業料(約10万円)実質無償化(4)授業料の上乗せがなくなります!

授業料(約10万円)実質無償化(5)授業料の上乗せがなくなります!

授業料(約10万円)実質無償化(6)授業料の上乗せがなくなります!

授業料(約10万円)実質無償化(7)授業料の上乗せがなくなります!

授業料(約10万円)実質無償化(8)授業料の上乗せがなくなります!

授業料(約10万円)実質無償化(9)授業料の上乗せがなくなります!

授業料(約10万円)実質無償化(10)授業料の上乗せがなくなります!

授業料(約10万円)実質無償化(11)授業料の上乗せがなくなります!

授業料(約10万円)実質無償化(12)授業料の上乗せがなくなります!

授業料(約10万円)実質無償化(13)授業料の上乗せがなくなります!

授業料(約10万円)実質無償化(14)授業料の上乗せがなくなります!

授業料(約10万円)実質無償化(15)授業料の上乗せがなくなります!

授業料(約10万円)実質無償化(16)授業料の上乗せがなくなります!

授業料(約10万円)実質無償化(17)授業料の上乗せがなくなります!

授業料(約10万円)実質無償化(18)授業料の上乗せがなくなります!

授業料(約10万円)実質無償化(19)授業料の上乗せがなくなります!

授業料(約10万円)実質無償化(20)授業料の上乗せがなくなります!

授業料(約10万円)実質無償化(21)授業料の上乗せがなくなります!

授業料(約10万円)実質無償化(22)授業料の上乗せがなくなります!

授業料(約10万円)実質無償化(23)授業料の上乗せがなくなります!

授業料(約10万円)実質無償化(24)授業料の上乗せがなくなります!

授業料(約10万円)実質無償化(25)授業料の上乗せがなくなります!

授業料(約10万円)実質無償化(26)授業料の上乗せがなくなります!

授業料(約10万円)実質無償化(27)授業料の上乗せがなくなります!

授業料(約10万円)実質無償化(28)授業料の上乗せがなくなります!

授業料(約10万円)実質無償化(29)授業料の上乗せがなくなります!

授業料(約10万円)実質無償化(30)授業料の上乗せがなくなります!

授業料(約10万円)実質無償化(31)授業料の上乗せがなくなります!

授業料(約10万円)実質無償化(32)授業料の上乗せがなくなります!

授業料(約10万円)実質無償化(33)授業料の上乗せがなくなります!

授業料(約10万円)実質無償化(34)授業料の上乗せがなくなります!

授業料(約10万円)実質無償化(35)授業料の上乗せがなくなります!

授業料(約10万円)実質無償化(36)授業料の上乗せがなくなります!

授業料(約10万円)実質無償化(37)授業料の上乗せがなくなります!

授業料(約10万円)実質無償化(38)授業料の上乗せがなくなります!

授業料(約10万円)実質無償化(39)授業料の上乗せがなくなります!

授業料(約10万円)実質無償化(40)授業料の上乗せがなくなります!

授業料(約10万円)実質無償化(41)授業料の上乗せがなくなります!

授業料(約10万円)実質無償化(42)授業料の上乗せがなくなります!

授業料(約10万円)実質無償化(43)授業料の上乗せがなくなります!

授業料(約10万円)実質無償化(44)授業料の上乗せがなくなります!

授業料(約10万円)実質無償化(45)授業料の上乗せがなくなります!

授業料(約10万円)実質無償化(46)授業料の上乗せがなくなります!

授業料(約10万円)実質無償化(47)授業料の上乗せがなくなります!

授業料(約10万円)実質無償化(48)授業料の上乗せがなくなります!

授業料(約10万円)実質無償化(49)授業料の上乗せがなくなります!

授業料(約10万円)実質無償化(50)授業料の上乗せがなくなります!

授業料(約10万円)実質無償化(51)授業料の上乗せがなくなります!

授業料(約10万円)実質無償化(52)授業料の上乗せがなくなります!

授業料(約10万円)実質無償化(53)授業料の上乗せがなくなります!

授業料(約10万円)実質無償化(54)授業料の上乗せがなくなります!

授業料(約10万円)実質無償化(55)授業料の上乗せがなくなります!

授業料(約10万円)実質無償化(56)授業料の上乗せがなくなります!

授業料(約10万円)実質無償化(57)授業料の上乗せがなくなります!

授業料(約10万円)実質無償化(58)授業料の上乗せがなくなります!

授業料(約10万円)実質無償化(59)授業料の上乗せがなくなります!

授業料(約10万円)実質無償化(60)授業料の上乗せがなくなります!

授業料(約10万円)実質無償化(61)授業料の上乗せがなくなります!

授業料(約10万円)実質無償化(62)授業料の上乗せがなくなります!

授業料(約10万円)実質無償化(63)授業料の上乗せがなくなります!

授業料(約10万円)実質無償化(64)授業料の上乗せがなくなります!

授業料(約10万円)実質無償化(65)授業料の上乗せがなくなります!

授業料(約10万円)実質無償化(66)授業料の上乗せがなくなります!

授業料(約10万円)実質無償化(67)授業料の上乗せがなくなります!

授業料(約10万円)実質無償化(68)授業料の上乗せがなくなります!

授業料(約10万円)実質無償化(69)授業料の上乗せがなくなります!

授業料(約10万円)実質無償化(70)授業料の上乗せがなくなります!

授業料(約10万円)実質無償化(71)授業料の上乗せがなくなります!

授業料(約10万円)実質無償化(72)授業料の上乗せがなくなります!

授業料(約10万円)実質無償化(73)授業料の上乗せがなくなります!

授業料(約10万円)実質無償化(74)授業料の上乗せがなくなります!

授業料(約10万円)実質無償化(75)授業料の上乗せがなくなります!

授業料(約10万円)実質無償化(76)授業料の上乗せがなくなります!

授業料(約10万円)実質無償化(77)授業料の上乗せがなくなります!

授業料(約10万円)実質無償化(78)授業料の上乗せがなくなります!

授業料(約10万円)実質無償化(79)授業料の上乗せがなくなります!

授業料(約10万円)実質無償化(80)授業料の上乗せがなくなります!

授業料(約10万円)実質無償化(81)授業料の上乗せがなくなります!

授業料(約10万円)実質無償化(82)授業料の上乗せがなくなります!

授業料(約10万円)実質無償化(83)授業料の上乗せがなくなります!

授業料(約10万円)実質無償化(84)授業料の上乗せがなくなります!

授業料(約10万円)実質無償化(85)授業料の上乗せがなくなります!

授業料(約10万円)実質無償化(86)授業料の上乗せがなくなります!

授業料(約10万円)実質無償化(87)授業料の上乗せがなくなります!

授業料(約10万円)実質無償化(88)授業料の上乗せがなくなります!

授業料(約10万円)実質無償化(89)授業料の上乗せがなくなります!

授業料(約10万円)実質無償化(90)授業料の上乗せがなくなります!

授業料(約10万円)実質無償化(91)授業料の上乗せがなくなります!

授業料(約10万円)実質無償化(92)授業料の上乗せがなくなります!

授業料(約10万円)実質無償化(93)授業料の上乗せがなくなります!

授業料(約10万円)実質無償化(94)授業料の上乗せがなくなります!

授業料(約10万円)実質無償化(95)授業料の上乗せがなくなります!

授業料(約10万円)実質無償化(96)授業料の上乗せがなくなります!

授業料(約10万円)実質無償化(97)授業料の上乗せがなくなります!

授業料(約10万円)実質無償化(98)授業料の上乗せがなくなります!

授業料(約10万円)実質無償化(99)授業料の上乗せがなくなります!

授業料(約10万円)実質無償化(100)授業料の上乗せがなくなります!

【作成 / Produced by】

こうえきざいだんほうじん なごやこくさい
公益財団法人名古屋国際センター

Nagoya International Center

All rights reserved

TEL 052-581-0100

FAX 052-571-4673

※本資料の内容の一部または全部を無断で引用・転載することはご遠慮ください。

This material may not be published, rewritten, or redistributed in whole or part without the express written permission of the Nagoya International Center.